



[Go to Product page](#)

Datasheet for ABIN718541  
**anti-BCL3 antibody (AA 341-454)**

1 Image

Overview

Quantity:	100 µL
Target:	BCL3
Binding Specificity:	AA 341-454
Reactivity:	Mouse
Host:	Rabbit
Clonality:	Polyclonal
Conjugate:	This BCL3 antibody is un-conjugated
Application:	Western Blotting (WB), ELISA, Immunofluorescence (Cultured Cells) (IF (cc)), Immunofluorescence (Paraffin-embedded Sections) (IF (p)), Immunohistochemistry (Paraffin-embedded Sections) (IHC (p)), Immunohistochemistry (Frozen Sections) (IHC (fro))

Product Details

Immunogen:	KLH conjugated synthetic peptide derived from human Bcl3
Isotype:	IgG
Cross-Reactivity:	Mouse
Predicted Reactivity:	Human,Rat,Dog,Cow,Pig
Purification:	Purified by Protein A.

Target Details

Target:	BCL3
---------	------

## Target Details

---

Alternative Name:	Bcl3 ( <a href="#">BCL3 Products</a> )
Background:	Synonyms: BCL4, D19S37, B-cell lymphoma 3 protein, BCL-3, Proto-oncogene BCL3, BCL3 Background: Contributes to the regulation of transcriptional activation of NF-kappa-B target genes. In the cytoplasm, inhibits the nuclear translocation of the NF-kappa-B p50 subunit. In the nucleus, acts as transcriptional activator that promotes transcription of NF-kappa-B target genes. Contributes to the regulation of cell proliferation (By similarity).
Gene ID:	602
UniProt:	<a href="#">P20749</a>
Pathways:	<a href="#">NF-kappaB Signaling</a> , <a href="#">Maintenance of Protein Location</a> , <a href="#">Protein targeting to Nucleus</a>

## Application Details

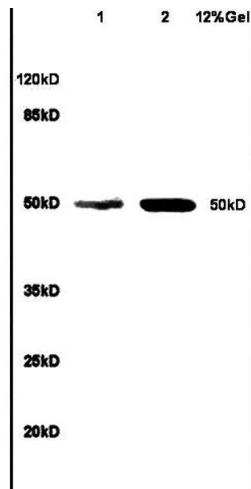
---

Application Notes:	WB 1:300-5000 ELISA 1:500-1000 IHC-P 1:200-400 IHC-F 1:100-500 IF(IHC-P) 1:50-200 IF(IHC-F) 1:50-200 IF(ICC) 1:50-200
Restrictions:	For Research Use only

## Handling

---

Format:	Liquid
Concentration:	1 µg/µL
Buffer:	0.01M TBS( pH 7.4) with 1 % BSA, 0.02 % Proclin300 and 50 % Glycerol.
Preservative:	ProClin
Precaution of Use:	This product contains ProClin: a POISONOUS AND HAZARDOUS SUBSTANCE, which should be handled by trained staff only.
Storage:	4 °C, -20 °C
Storage Comment:	Shipped at 4°C. Store at -20°C for one year. Avoid repeated freeze/thaw cycles.
Expiry Date:	12 months



### SDS-PAGE

**Image 1.** Lane 1: mouse brain lysates Lane 2: human colon carcinoma lysates probed with Anti-BCL3 Polyclonal Antibody, Unconjugated (ABIN718541) at 1:200 in 4C. Followed by conjugation to secondary antibody at 1:3000 90min in 37C. Predicted band 50kD. Observed band size: 50kD