

Datasheet for ABIN7185471  
**anti-RCL1 antibody (C-Term)**



[Go to Product page](#)

1 Image

## Overview

Quantity:	100 µg
Target:	RCL1
Binding Specificity:	C-Term
Reactivity:	Human
Host:	Rabbit
Clonality:	Polyclonal
Conjugate:	This RCL1 antibody is un-conjugated
Application:	Western Blotting (WB), ELISA

## Product Details

Immunogen:	Synthesized peptide derived from the C-terminal region of Human RCL1.
Isotype:	IgG
Cross-Reactivity:	Human, Mouse, Rat
Purification:	The antibody was affinity-purified from rabbit antiserum by affinity-chromatography using epitope-specific immunogen.

## Target Details

Target:	RCL1
Alternative Name:	RCL1 ( <a href="#">RCL1 Products</a> )
Background:	RCL1 antibody, RCL1_HUMAN antibody, RNA 3' terminal phosphate cyclase like protein

## Target Details

antibody, RNA 3"-terminal phosphate cyclase-like protein antibody, RNA cyclase homolog antibody, RNA terminal phosphate cyclase like 1 antibody, RNAC antibody, RPC2 antibody, RPCL1 antibody, RTC2 antibody

UniProt: [Q9Y2P8](#)

## Application Details

Application Notes: WB:1:500-1:2000, ELISA:1:40000,

Restrictions: For Research Use only

## Handling

Format: Liquid

Buffer: Liquid in PBS containing 50 % glycerol, 0.5 % BSA and 0.02 % sodium azide.

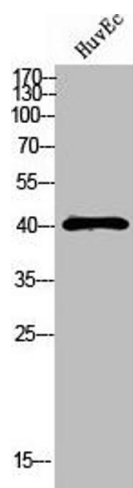
Preservative: Sodium azide

Precaution of Use: This product contains Sodium azide: a POISONOUS AND HAZARDOUS SUBSTANCE which should be handled by trained staff only.

Storage: -20 °C,-80 °C

Storage Comment: Upon receipt, store at -20°C or -80°C. Avoid repeated freeze.

## Images



### Western Blotting

**Image 1.** Western Blot analysis of HUVEC cells using RCL1 Polyclonal Antibody