



[Go to Product page](#)

Datasheet for ABIN7185477
anti-RFC1 antibody (C-Term)

1 Image

Overview

Quantity:	100 µg
Target:	RFC1
Binding Specificity:	C-Term
Reactivity:	Human
Host:	Rabbit
Clonality:	Polyclonal
Conjugate:	This RFC1 antibody is un-conjugated
Application:	Western Blotting (WB), ELISA

Product Details

Immunogen:	Synthesized peptide derived from the C-terminal region of Human RFC1.
Isotype:	IgG
Cross-Reactivity:	Human
Purification:	The antibody was affinity-purified from rabbit antiserum by affinity-chromatography using epitope-specific immunogen.

Target Details

Target:	RFC1
Alternative Name:	RFC1 (RFC1 Products)
Background:	A1 140 kDa subunit antibody, A1 antibody, A1 P145 Activator 1 large subunit antibody, Activator

Target Details

1 140 kDa subunit antibody, Activator 1 large subunit antibody, Activator 1 subunit 1 antibody, DNA binding Protein PO GA antibody, DNA-binding protein PO-GA antibody, MHC binding factor beta antibody, MHC BFB antibody, PO GA antibody, RECC1 antibody, Replication factor C (activator 1) 1, 145 kDa antibody, Replication factor C 140 kDa subunit antibody, Replication factor C antibody, Replication factor C large subunit antibody, Replication factor C subunit 1 antibody, Replication factor C1 antibody, RF-C 140 kDa subunit antibody, RFC antibody, RFC1 antibody, RFC1_HUMAN antibody, RFC140 antibody, RFC140 Replication Factor C 140 kDa subunit antibody

UniProt: [P35251](#)

Pathways: [Telomere Maintenance](#), [DNA Damage Repair](#), [DNA Replication](#), [Synthesis of DNA](#), [Dicarboxylic Acid Transport](#)

Application Details

Application Notes: WB:1:500-1:2000, ELISA:1:20000,

Restrictions: For Research Use only

Handling

Format: Liquid

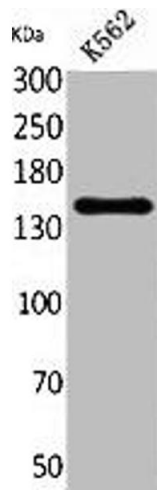
Buffer: Liquid in PBS containing 50 % glycerol, 0.5 % BSA and 0.02 % sodium azide.

Preservative: Sodium azide

Precaution of Use: This product contains Sodium azide: a POISONOUS AND HAZARDOUS SUBSTANCE which should be handled by trained staff only.

Storage: -20 °C, -80 °C

Storage Comment: Upon receipt, store at -20°C or -80°C. Avoid repeated freeze.



Western Blotting

Image 1. Western Blot analysis of K562 cells using RFC1 Polyclonal Antibody.