

Datasheet for ABIN7185496
anti-RIT1 antibody (C-Term)[Go to Product page](#)

1 Image

Overview

Quantity:	100 µg
Target:	RIT1
Binding Specificity:	C-Term
Reactivity:	Human
Host:	Rabbit
Clonality:	Polyclonal
Conjugate:	This RIT1 antibody is un-conjugated
Application:	Western Blotting (WB), ELISA

Product Details

Immunogen:	Synthesized peptide derived from the C-terminal region of Human Rit1.
Isotype:	IgG
Cross-Reactivity:	Human, Mouse
Purification:	The antibody was affinity-purified from rabbit antiserum by affinity-chromatography using epitope-specific immunogen.

Target Details

Target:	RIT1
Alternative Name:	RIT1 (RIT1 Products)
Background:	GTP binding protein Roc1 antibody, GTP-binding protein Rit1 antibody, NS8 antibody, Ras like

Target Details

protein expressed in many tissues antibody, Ras like without CAAX 1 antibody, Ras-like protein expressed in many tissues antibody, Ras-like without CAAX protein 1 antibody, RIBB antibody, Ric like expressed in many tissues antibody, Ric-like protein without CAAX motif 1 antibody, RIT antibody, RIT1 antibody, RIT1_HUMAN antibody, ROC1 antibody

UniProt: [Q92963](#)

Pathways: [Neurotrophin Signaling Pathway](#)

Application Details

Application Notes: WB:1:500-1:2000, ELISA:1:10000,

Restrictions: For Research Use only

Handling

Format: Liquid

Buffer: Liquid in PBS containing 50 % glycerol, 0.5 % BSA and 0.02 % sodium azide.

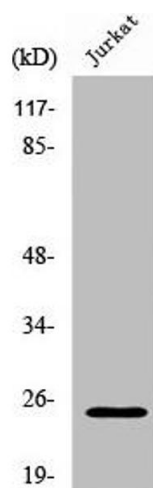
Preservative: Sodium azide

Precaution of Use: This product contains Sodium azide: a POISONOUS AND HAZARDOUS SUBSTANCE which should be handled by trained staff only.

Storage: -20 °C,-80 °C

Storage Comment: Upon receipt, store at -20°C or -80°C. Avoid repeated freeze.

Images



Western Blotting

Image 1. Western Blot analysis of Jurkat cells using Rit1 Polyclonal Antibody