



[Go to Product page](#)

Datasheet for ABIN7185501  
**anti-RRP7A antibody (C-Term)**

1 Image

### Overview

Quantity:	100 µg
Target:	RRP7A
Binding Specificity:	C-Term
Reactivity:	Human
Host:	Rabbit
Clonality:	Polyclonal
Conjugate:	This RRP7A antibody is un-conjugated
Application:	Western Blotting (WB), ELISA

### Product Details

Immunogen:	Synthesized peptide derived from the C-terminal region of Human RRP7A.
Isotype:	IgG
Cross-Reactivity:	Human, Mouse, Rat
Purification:	The antibody was affinity-purified from rabbit antiserum by affinity-chromatography using epitope-specific immunogen.

### Target Details

Target:	RRP7A
Alternative Name:	RRP7A ( <a href="#">RRP7A Products</a> )
Background:	1110014J01Rik antibody, AA408146 antibody, BK126B4.3, antibody, CGI 96 antibody, CGI-96

## Target Details

antibody, CTA-126B4.5 antibody, Gastric cancer antigen Zg14 antibody, Kheg1 antibody, MGC150422 antibody, MGC150423 antibody, RGD1311547 antibody, Ribosomal RNA-processing protein 7 homolog A antibody, Rrp7a antibody, RRP7A\_HUMAN antibody

UniProt: [Q9Y3A4](#)

## Application Details

Application Notes: WB:1:500-1:2000, ELISA:1:20000,

Restrictions: For Research Use only

## Handling

Format: Liquid

Buffer: Liquid in PBS containing 50 % glycerol, 0.5 % BSA and 0.02 % sodium azide.

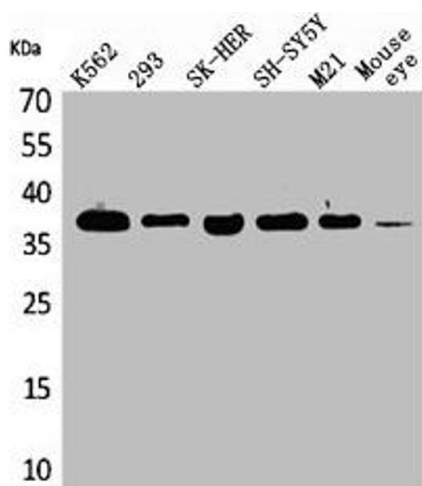
Preservative: Sodium azide

Precaution of Use: This product contains Sodium azide: a POISONOUS AND HAZARDOUS SUBSTANCE which should be handled by trained staff only.

Storage: -20 °C,-80 °C

Storage Comment: Upon receipt, store at -20°C or -80°C. Avoid repeated freeze.

## Images



### Western Blotting

**Image 1.** Western Blot analysis of K562 293 SK-HEP-1 SHSY5Y M21 mouse eye cells using RRP7A Polyclonal Antibody