



[Go to Product page](#)

Datasheet for ABIN7185502
anti-RPS6KA6 antibody (C-Term)

1 Image

Overview

Quantity:	100 µg
Target:	RPS6KA6
Binding Specificity:	C-Term
Reactivity:	Human
Host:	Rabbit
Clonality:	Polyclonal
Conjugate:	This RPS6KA6 antibody is un-conjugated
Application:	ELISA, Western Blotting (WB), Immunohistochemistry (IHC)

Product Details

Immunogen:	Synthesized peptide derived from the C-terminal region of Human Rsk-4.
Isotype:	IgG
Cross-Reactivity:	Human
Purification:	The antibody was affinity-purified from rabbit antiserum by affinity-chromatography using epitope-specific immunogen.

Target Details

Target:	RPS6KA6
Alternative Name:	RPS6KA6 (RPS6KA6 Products)
Background:	90 kDa ribosomal protein S6 kinase 6 antibody, KS6A6_HUMAN antibody, p90 RSK 6 antibody,

Target Details

p90-RSK 6 antibody, p90RSK6 antibody, pp90RSK4 antibody, Ribosomal protein S6 kinase 90 kDa polypeptide 6 antibody, Ribosomal protein S6 kinase alpha 6 antibody, Ribosomal protein S6 kinase alpha-6 antibody, Ribosomal S6 kinase 4 antibody, rps6ka6 antibody, RSK 4 antibody, RSK-4 antibody, S6K-alpha-6 antibody

UniProt: [Q9UK32](#)

Pathways: [MAPK Signaling](#)

Application Details

Application Notes: WB:1:500-1:2000, IHC:1:100-1:300, ELISA:1:10000,

Restrictions: For Research Use only

Handling

Format: Liquid

Buffer: Liquid in PBS containing 50 % glycerol, 0.5 % BSA and 0.02 % sodium azide.

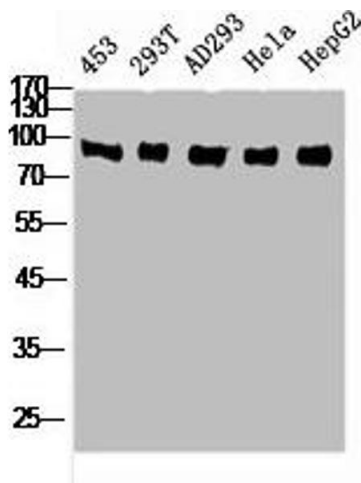
Preservative: Sodium azide

Precaution of Use: This product contains Sodium azide: a POISONOUS AND HAZARDOUS SUBSTANCE which should be handled by trained staff only.

Storage: -20 °C,-80 °C

Storage Comment: Upon receipt, store at -20°C or -80°C. Avoid repeated freeze.

Images



Western Blotting

Image 1. Western Blot analysis of 453 293T AD293 HELA HepG2 cells using Rsk-4 Polyclonal Antibody