



[Go to Product page](#)

Datasheet for ABIN7185516
anti-SEN2 antibody (C-Term)

1 Image

Overview

Quantity:	100 µg
Target:	SEN2
Binding Specificity:	C-Term
Reactivity:	Human
Host:	Rabbit
Clonality:	Polyclonal
Conjugate:	This SEN2 antibody is un-conjugated
Application:	Western Blotting (WB), Immunohistochemistry (IHC), ELISA

Product Details

Immunogen:	Synthesized peptide derived from the C-terminal region of Human SEN2.
Isotype:	IgG
Cross-Reactivity:	Human, Mouse, Rat
Purification:	The antibody was affinity-purified from rabbit antiserum by affinity-chromatography using epitope-specific immunogen.

Target Details

Target:	SEN2
Alternative Name:	SEN2 (SEN2 Products)
Background:	Axam2 antibody, DKFZp762A2316 antibody, KIAA1331 antibody, Senp2 antibody,

Target Details

SEN2_HUMAN antibody, Sentrin specific protease 2 antibody, Sentrin-specific protease 2 antibody, Sentrin/SUMO specific protease SENP2 antibody, Sentrin/SUMO-specific protease SENP2 antibody, SMT3 specific isopeptidase 2 antibody, SMT3-specific isopeptidase 2 antibody, Smt3ip2 antibody, SUMO1/sentrin/SMT3 specific peptidase 2 antibody

UniProt: [Q9HC62](#)

Pathways: [Chromatin Binding](#)

Application Details

Application Notes: WB:1:500-1:2000, IHC:1:100-1:300, ELISA:1:20000,

Restrictions: For Research Use only

Handling

Format: Liquid

Buffer: Liquid in PBS containing 50 % glycerol, 0.5 % BSA and 0.02 % sodium azide.

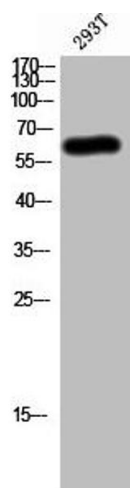
Preservative: Sodium azide

Precaution of Use: This product contains Sodium azide: a POISONOUS AND HAZARDOUS SUBSTANCE which should be handled by trained staff only.

Storage: -20 °C,-80 °C

Storage Comment: Upon receipt, store at -20°C or -80°C. Avoid repeated freeze.

Images



Western Blotting

Image 1. Western Blot analysis of 293T cells using SENP2 Polyclonal Antibody