



[Go to Product page](#)

Datasheet for ABIN7185517
anti-SEN5 antibody (C-Term)

1 Image

Overview

Quantity:	100 µg
Target:	SEN5
Binding Specificity:	C-Term
Reactivity:	Human
Host:	Rabbit
Clonality:	Polyclonal
Conjugate:	This SEN5 antibody is un-conjugated
Application:	Western Blotting (WB), ELISA, Immunohistochemistry (IHC)

Product Details

Immunogen:	Synthesized peptide derived from the C-terminal region of Human SEN5.
Isotype:	IgG
Cross-Reactivity:	Human, Monkey, Mouse
Purification:	The antibody was affinity-purified from rabbit antiserum by affinity-chromatography using epitope-specific immunogen.

Target Details

Target:	SEN5
Alternative Name:	SEN5 (SEN5 Products)
Background:	FKSG45 antibody, FLJ42398 antibody, MGC27076 antibody, Protease FKSG45 antibody, SEN5

Target Details

antibody, SENP5_HUMAN antibody, Sentrin specific protease SENP5 antibody, Sentrin-specific protease 5 antibody, Sentrin/SUMO specific protease SENP5 antibody, Sentrin/SUMO-specific protease SENP5 antibody, SUMO specific protease SENP5 antibody, SUMO1/sentrin specific peptidase 5 antibody, SUMO1/sentrin specific protease 5 antibody

UniProt: [Q96HI0](#)

Application Details

Application Notes: WB:1:500-1:2000, IHC:1:100-1:300, ELISA:1:20000,

Restrictions: For Research Use only

Handling

Format: Liquid

Buffer: Liquid in PBS containing 50 % glycerol, 0.5 % BSA and 0.02 % sodium azide.

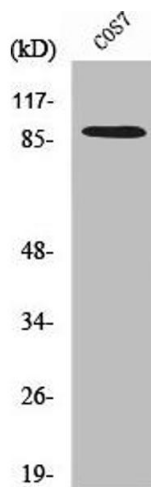
Preservative: Sodium azide

Precaution of Use: This product contains Sodium azide: a POISONOUS AND HAZARDOUS SUBSTANCE which should be handled by trained staff only.

Storage: -20 °C,-80 °C

Storage Comment: Upon receipt, store at -20°C or -80°C. Avoid repeated freeze.

Images



Western Blotting

Image 1. Western Blot analysis of COS7 cells using SENP5 Polyclonal Antibody