



[Go to Product page](#)

Datasheet for ABIN7185524
anti-SERINC1 antibody (C-Term)

1 Image

Overview

Quantity:	100 µg
Target:	SERINC1
Binding Specificity:	C-Term
Reactivity:	Human
Host:	Rabbit
Clonality:	Polyclonal
Conjugate:	This SERINC1 antibody is un-conjugated
Application:	ELISA, Western Blotting (WB), Immunohistochemistry (IHC), Immunofluorescence (IF)

Product Details

Immunogen:	Synthesized peptide derived from the C-terminal region of Human Serinc1.
Isotype:	IgG
Cross-Reactivity:	Human, Mouse, Rat
Purification:	The antibody was affinity-purified from rabbit antiserum by affinity-chromatography using epitope-specific immunogen.

Target Details

Target:	SERINC1
Alternative Name:	SERINC1 (SERINC1 Products)
Background:	1500011D18Rik antibody, AI315070 antibody, AIGP 2 antibody, KIAA1253 antibody,

Target Details

LRRGT00191 antibody, mKIAA1253 antibody, SERC1_HUMAN antibody, SERINC1 antibody, Serine incorporator 1 antibody, TDE1L antibody, TDE2 antibody, TMS 2 antibody, Tms2 antibody, Tumor differentially expressed 1 protein like antibody, Tumor differentially expressed protein 1-like antibody, Tumor differentially expressed protein 2 antibody, UNQ396/PRO732 antibody

UniProt: [Q9NRX5](#)

Application Details

Application Notes: WB:1:500-1:2000, IHC:1:100-1:300, IF:1:200-1:1000, ELISA:1:20000,

Restrictions: For Research Use only

Handling

Format: Liquid

Buffer: Liquid in PBS containing 50 % glycerol, 0.5 % BSA and 0.02 % sodium azide.

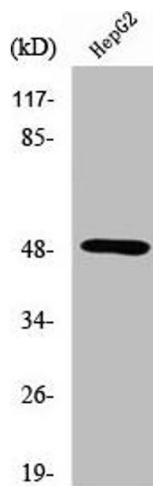
Preservative: Sodium azide

Precaution of Use: This product contains Sodium azide: a POISONOUS AND HAZARDOUS SUBSTANCE which should be handled by trained staff only.

Storage: -20 °C,-80 °C

Storage Comment: Upon receipt, store at -20°C or -80°C. Avoid repeated freeze.

Images



Western Blotting

Image 1. Western Blot analysis of HepG2 cells using Serinc1 Polyclonal Antibody