

Datasheet for ABIN7185536
anti-Slc6a14 antibody (C-Term)[Go to Product page](#)

1 Image

Overview

Quantity:	100 µg
Target:	Slc6a14
Binding Specificity:	C-Term
Reactivity:	Human
Host:	Rabbit
Clonality:	Polyclonal
Conjugate:	This Slc6a14 antibody is un-conjugated
Application:	Western Blotting (WB), ELISA

Product Details

Immunogen:	Synthesized peptide derived from the C-terminal region of Human SLC6A14.
Isotype:	IgG
Cross-Reactivity:	Human
Purification:	The antibody was affinity-purified from rabbit antiserum by affinity-chromatography using epitope-specific immunogen.

Target Details

Target:	Slc6a14
Alternative Name:	SLC6A14 (Slc6a14 Products)
Background:	SLC6A14 antibody, Sodium- and chloride-dependent neutral and basic amino acid transporter

Target Details

B(0+ antibody, Amino acid transporter ATB0+ antibody, Solute carrier family 6 member 14 antibody

UniProt: [Q9UN76](#)

Application Details

Application Notes: WB:1:500-1:2000, ELISA:1:40000,

Restrictions: For Research Use only

Handling

Format: Liquid

Buffer: Liquid in PBS containing 50 % glycerol, 0.5 % BSA and 0.02 % sodium azide.

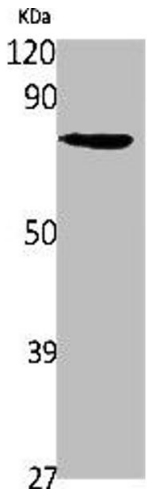
Preservative: Sodium azide

Precaution of Use: This product contains Sodium azide: a POISONOUS AND HAZARDOUS SUBSTANCE which should be handled by trained staff only.

Storage: -20 °C,-80 °C

Storage Comment: Upon receipt, store at -20°C or -80°C. Avoid repeated freeze.

Images



Western Blotting

Image 1. Western Blot analysis of 293 cells using SLC6A14 Polyclonal Antibody