

Datasheet for ABIN7185555
anti-SSBP1 antibody (C-Term)[Go to Product page](#)

1 Image

Overview

Quantity:	100 µg
Target:	SSBP1
Binding Specificity:	C-Term
Reactivity:	Human
Host:	Rabbit
Clonality:	Polyclonal
Conjugate:	This SSBP1 antibody is un-conjugated
Application:	Western Blotting (WB), ELISA, Immunohistochemistry (IHC), Immunofluorescence (IF)

Product Details

Immunogen:	Synthesized peptide derived from the C-terminal region of Human SSBP1.
Isotype:	IgG
Cross-Reactivity:	Human, Mouse, Rat
Purification:	The antibody was affinity-purified from rabbit antiserum by affinity-chromatography using epitope-specific immunogen.

Target Details

Target:	SSBP1
Alternative Name:	SSBP1 (SSBP1 Products)
Background:	Mitochondrial antibody, Mt SSB antibody, Mt-SSB antibody, MtSSB antibody, PWP1 interacting

Target Details

protein 17 antibody, PWP1-interacting protein 17 antibody, SENSOR OF SINGLE-STRANDED DNA COMPLEX antibody, Single stranded DNA binding protein 1 antibody, Single stranded DNA binding protein antibody, Single stranded DNA binding protein mitochondrial antibody, Single-stranded DNA-binding protein antibody, SOSS B1 antibody, SOSS COMPLEX, SUBUNIT B1 antibody, SSBP 1 antibody, SSBP antibody, SSBP_HUMAN antibody, SSBP1 antibody

UniProt: [Q04837](#)

Pathways: [Chromatin Binding](#)

Application Details

Application Notes: WB:1:500-1:2000, IHC:1:100-1:300, IF:1:200-1:1000, ELISA:1:20000,

Restrictions: For Research Use only

Handling

Format: Liquid

Buffer: Liquid in PBS containing 50 % glycerol, 0.5 % BSA and 0.02 % sodium azide.

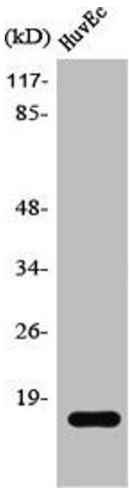
Preservative: Sodium azide

Precaution of Use: This product contains Sodium azide: a POISONOUS AND HAZARDOUS SUBSTANCE which should be handled by trained staff only.

Storage: -20 °C,-80 °C

Storage Comment: Upon receipt, store at -20°C or -80°C. Avoid repeated freeze.

Images



Western Blotting

Image 1. Western Blot analysis of HeLa cells using SSBP1 Polyclonal Antibody