



Datasheet for ABIN7185564
anti-SYT1 antibody (C-Term)



[Go to Product page](#)

1 Image

Overview

Quantity:	100 µg
Target:	SYT1
Binding Specificity:	C-Term
Reactivity:	Human
Host:	Rabbit
Clonality:	Polyclonal
Application:	Western Blotting (WB), ELISA

Product Details

Immunogen:	Synthesized peptide derived from the C-terminal region of Human Synaptotagmin X.
Isotype:	IgG
Cross-Reactivity:	Human, Mouse, Rat
Purification:	The antibody was affinity-purified from rabbit antiserum by affinity-chromatography using epitope-specific immunogen.

Target Details

Target:	SYT1
Alternative Name:	SYT1 (SYT1 Products)
Background:	Synaptotagmin X antibody, Synaptotagmin-10 antibody, SYT10 antibody, SYT10_HUMAN antibody, SytX antibody

Target Details

UniProt: [Q6XYQ8](#)

Pathways: [Synaptic Vesicle Exocytosis, Dicarboxylic Acid Transport](#)

Application Details

Application Notes: WB:1:500-1:2000, ELISA:1:20000,

Restrictions: For Research Use only

Handling

Format: Liquid

Buffer: Liquid in PBS containing 50 % glycerol, 0.5 % BSA and 0.02 % sodium azide.

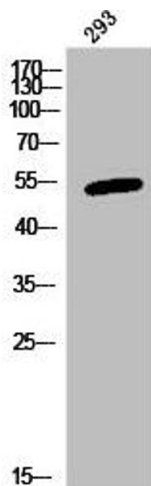
Preservative: Sodium azide

Precaution of Use: This product contains Sodium azide: a POISONOUS AND HAZARDOUS SUBSTANCE which should be handled by trained staff only.

Storage: -20 °C,-80 °C

Storage Comment: Upon receipt, store at -20°C or -80°C. Avoid repeated freeze.

Images



Western Blotting

Image 1. Western Blot analysis of 293 cells using Synaptotagmin X Polyclonal Antibody