



[Go to Product page](#)

Datasheet for ABIN7185588
anti-SERINC2 antibody (C-Term)

1 Image

Overview

Quantity:	100 µg
Target:	SERINC2
Binding Specificity:	C-Term
Reactivity:	Human
Host:	Rabbit
Clonality:	Polyclonal
Application:	Western Blotting (WB), ELISA, Immunohistochemistry (IHC), Immunofluorescence (IF)

Product Details

Immunogen:	Synthesized peptide derived from the C-terminal region of Human TDE2L.
Isotype:	IgG
Cross-Reactivity:	Human, Mouse, Rat
Purification:	The antibody was affinity-purified from rabbit antiserum by affinity-chromatography using epitope-specific immunogen.

Target Details

Target:	SERINC2
Alternative Name:	SERINC2 (SERINC2 Products)
Background:	AW121759 antibody, FKSG84 antibody, MGC116219 antibody, MGC90340 antibody, PRO0899 antibody, RP23 12J1.7 antibody, SERC2_HUMAN antibody, Serinc2 antibody, Serine incorporator 2 antibody, TDE2 antibody, TDE2L antibody, Tumor differentially expressed 2 like

Target Details

antibody, Tumor differentially expressed gene 2 antibody, Tumor differentially expressed protein 2 antibody, Tumor differentially expressed protein 2-like antibody, UNQ263/PRO300 antibody

UniProt: [Q96SA4](#)

Application Details

Application Notes: WB:1:500-1:2000, IHC:1:100-1:300, IF:1:200-1:1000, ELISA:1:40000,

Restrictions: For Research Use only

Handling

Format: Liquid

Buffer: Liquid in PBS containing 50 % glycerol, 0.5 % BSA and 0.02 % sodium azide.

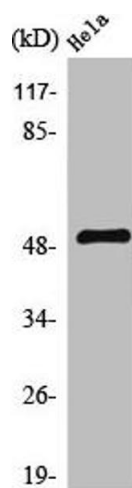
Preservative: Sodium azide

Precaution of Use: This product contains Sodium azide: a POISONOUS AND HAZARDOUS SUBSTANCE which should be handled by trained staff only.

Storage: -20 °C,-80 °C

Storage Comment: Upon receipt, store at -20°C or -80°C. Avoid repeated freeze.

Images



Western Blotting

Image 1. Western Blot analysis of HeLa cells using TDE2L Polyclonal Antibody