

Datasheet for ABIN7185597
anti-TFPI antibody (C-Term)[Go to Product page](#)

1 Image

Overview

| | |
|----------------------|------------------------------|
| Quantity: | 100 µg |
| Target: | TFPI |
| Binding Specificity: | C-Term |
| Reactivity: | Human |
| Host: | Rabbit |
| Clonality: | Polyclonal |
| Application: | Western Blotting (WB), ELISA |

Product Details

| | |
|-------------------|---|
| Immunogen: | Synthesized peptide derived from the C-terminal region of Human TFPI. |
| Isotype: | IgG |
| Cross-Reactivity: | Human |
| Purification: | The antibody was affinity-purified from rabbit antiserum by affinity-chromatography using epitope-specific immunogen. |

Target Details

| | |
|-------------------|---|
| Target: | TFPI |
| Alternative Name: | TFPI (TFPI Products) |
| Background: | Anti convertin antibody, EPI antibody, Extrinsic pathway inhibitor antibody, LACI antibody, Lipoprotein associated coagulation inhibitor antibody, Lipoprotein-associated coagulation inhibitor antibody, TFI antibody, TFPI 1 antibody, TFPI antibody, TFPI1 antibody, TFPI1_HUMAN |

Target Details

antibody, Tissue factor pathway inhibitor (lipoprotein associated coagulation inhibitor) antibody, Tissue factor pathway inhibitor antibody

UniProt: [P10646](#)

Application Details

Application Notes: WB:1:500-1:2000, ELISA:1:20000,

Restrictions: For Research Use only

Handling

Format: Liquid

Buffer: Liquid in PBS containing 50 % glycerol, 0.5 % BSA and 0.02 % sodium azide.

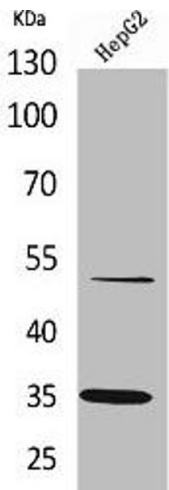
Preservative: Sodium azide

Precaution of Use: This product contains Sodium azide: a POISONOUS AND HAZARDOUS SUBSTANCE which should be handled by trained staff only.

Storage: -20 °C,-80 °C

Storage Comment: Upon receipt, store at -20°C or -80°C. Avoid repeated freeze.

Images



Western Blotting

Image 1. Western Blot analysis of HepG2 cells using TFPI Polyclonal Antibody