

Datasheet for ABIN7185599
anti-TGFB1 antibody (C-Term)

3 Images

[Go to Product page](#)

Overview

Quantity:	100 µg
Target:	TGFB1
Binding Specificity:	C-Term
Reactivity:	Human
Host:	Rabbit
Clonality:	Polyclonal
Application:	Western Blotting (WB), Immunohistochemistry (IHC), ELISA, Immunofluorescence (IF)

Product Details

Immunogen:	Synthesized peptide derived from the C-terminal region of Human TGFbeta1.
Isotype:	IgG
Cross-Reactivity:	Human, Mouse, Rat
Purification:	The antibody was affinity-purified from rabbit antiserum by affinity-chromatography using epitope-specific immunogen.

Target Details

Target:	TGFB1
Alternative Name:	TGFB1 (TGFB1 Products)
Background:	Cartilage-inducing factor antibody, CED antibody, Differentiation inhibiting factor antibody, DPD1 antibody, LAP antibody, Latency-associated peptide antibody, Prepro transforming growth factor beta 1 antibody, TGF beta 1 antibody, TGF beta antibody, TGF beta 1 protein

Target Details

antibody, TGF-beta 1 protein antibody, TGF-beta-1 antibody, TGF-beta-5 antibody, TGF-beta1 antibody, TGFB antibody, Tgfb-1 antibody, tgfb1 antibody, TGFB1_HUMAN antibody, TGFbeta antibody, TGFbeta1 antibody, Transforming Growth Factor b1 antibody, Transforming Growth Factor beta 1 antibody, Transforming growth factor beta 1a antibody, transforming growth factor beta-1 antibody, transforming growth factor, beta 1 antibody, Transforming Growth Factor-1 antibody

UniProt: [P01137](#)

Pathways: [EGFR Signaling Pathway](#), [Dopaminergic Neurogenesis](#), [Cellular Response to Molecule of Bacterial Origin](#), [Glycosaminoglycan Metabolic Process](#), [Regulation of Leukocyte Mediated Immunity](#), [Regulation of Muscle Cell Differentiation](#), [Positive Regulation of Immune Effector Process](#), [Cell-Cell Junction Organization](#), [Production of Molecular Mediator of Immune Response](#), [Ribonucleoside Biosynthetic Process](#), [Skeletal Muscle Fiber Development](#), [Regulation of Carbohydrate Metabolic Process](#), [Protein targeting to Nucleus](#), [Autophagy](#), [Cancer Immune Checkpoints](#)

Application Details

Application Notes: WB:1:500-1:2000, IHC:1:100-1:300, IF:1:200-1:1000, ELISA:1:20000,

Restrictions: For Research Use only

Handling

Format: Liquid

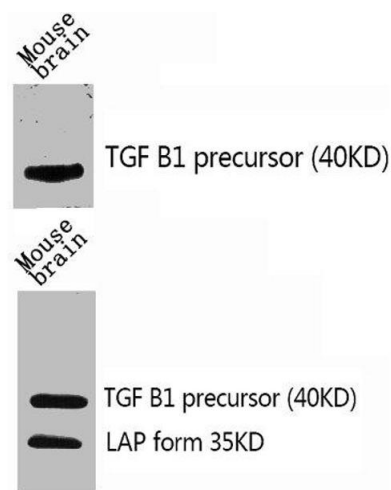
Buffer: Liquid in PBS containing 50 % glycerol, 0.5 % BSA and 0.02 % sodium azide.

Preservative: Sodium azide

Precaution of Use: This product contains Sodium azide: a POISONOUS AND HAZARDOUS SUBSTANCE which should be handled by trained staff only.

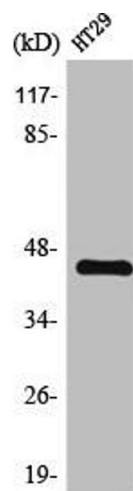
Storage: -20 °C, -80 °C

Storage Comment: Upon receipt, store at -20°C or -80°C. Avoid repeated freeze.



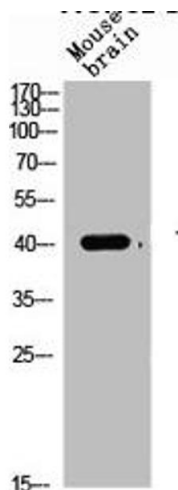
Western Blotting

Image 1. Western Blot analysis of mouse-brain using TGFβ1 Polyclonal Antibody.



Western Blotting

Image 2. Western Blot analysis of HT29 cells using TGFβ1 Polyclonal Antibody



Western Blotting

Image 3. Western Blot analysis of mouse-brain cells using TGFβ1 Polyclonal Antibody