



Datasheet for ABIN7185669
anti-XRCC1 antibody (C-Term)



[Go to Product page](#)

1 Image

Overview

Quantity:	100 µg
Target:	XRCC1
Binding Specificity:	C-Term
Reactivity:	Human
Host:	Rabbit
Clonality:	Polyclonal
Conjugate:	This XRCC1 antibody is un-conjugated
Application:	Western Blotting (WB), Immunohistochemistry (IHC), ELISA

Product Details

Immunogen:	Synthesized peptide derived from the C-terminal region of Human XRCC1.
Isotype:	IgG
Cross-Reactivity:	Human, Mouse, Rat
Purification:	The antibody was affinity-purified from rabbit antiserum by affinity-chromatography using epitope-specific immunogen.

Target Details

Target:	XRCC1
Alternative Name:	XRCC1 (XRCC1 Products)
Background:	DNA repair protein XRCC1 antibody, RCC antibody, X ray repair complementing defective repair

Target Details

in chinese hamster antibody, X ray Repair Complementing Defective Repair in Chinese Hamster Cells antibody, X ray repair complementing defective repair in chinese hamster cells 1 antibody, X ray repair cross complementing 1 antibody, X ray repair cross complementing protein 1 antibody, X ray repair, complementing defective, repair in Chinese hamster antibody, X-ray repair cross-complementing protein 1 antibody, XRCC 1 antibody, Xrcc1 antibody, XRCC1_HUMAN antibody

UniProt: [P18887](#)

Pathways: [DNA Damage Repair](#)

Application Details

Application Notes: WB:1:500-1:2000, IHC:1:100-1:300, ELISA:1:10000,

Restrictions: For Research Use only

Handling

Format: Liquid

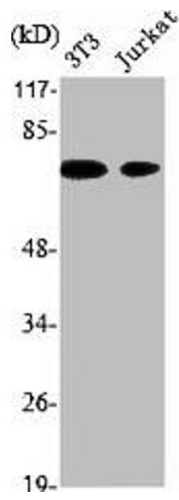
Buffer: Liquid in PBS containing 50 % glycerol, 0.5 % BSA and 0.02 % sodium azide.

Preservative: Sodium azide

Precaution of Use: This product contains Sodium azide: a POISONOUS AND HAZARDOUS SUBSTANCE which should be handled by trained staff only.

Storage: -20 °C,-80 °C

Storage Comment: Upon receipt, store at -20°C or -80°C. Avoid repeated freeze.



Western Blotting

Image 1. Western Blot analysis of NIH-3T3 Jurkat cells using XRCC1 Polyclonal Antibody