

Datasheet for ABIN7185670  
**anti-XRCC2 antibody (C-Term)**[Go to Product page](#)

## 1 Image

## Overview

Quantity:	100 µg
Target:	XRCC2
Binding Specificity:	C-Term
Reactivity:	Human
Host:	Rabbit
Clonality:	Polyclonal
Conjugate:	This XRCC2 antibody is un-conjugated
Application:	Western Blotting (WB), Immunohistochemistry (IHC), ELISA

## Product Details

Immunogen:	Synthesized peptide derived from the C-terminal region of Human XRCC2.
Isotype:	IgG
Cross-Reactivity:	Human
Purification:	The antibody was affinity-purified from rabbit antiserum by affinity-chromatography using epitope-specific immunogen.

## Target Details

Target:	XRCC2
Alternative Name:	XRCC2 ( <a href="#">XRCC2 Products</a> )
Background:	DKFZp781P0919 antibody, DNA repair protein XRCC2 antibody, X ray repair complementing

## Target Details

defective repair in Chinese hamster cells 2 antibody, X ray repair cross complementing protein 2 antibody, X-ray repair cross-complementing protein 2 antibody, Xrcc2 antibody, XRCC2\_HUMAN antibody

UniProt: [O43543](#)

Pathways: [DNA Damage Repair](#)

## Application Details

Application Notes: WB:1:500-1:2000, IHC:1:100-1:300, ELISA:1:10000,

Restrictions: For Research Use only

## Handling

Format: Liquid

Buffer: Liquid in PBS containing 50 % glycerol, 0.5 % BSA and 0.02 % sodium azide.

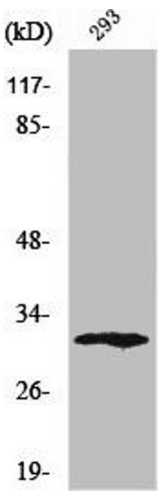
Preservative: Sodium azide

Precaution of Use: This product contains Sodium azide: a POISONOUS AND HAZARDOUS SUBSTANCE which should be handled by trained staff only.

Storage: -20 °C,-80 °C

Storage Comment: Upon receipt, store at -20°C or -80°C. Avoid repeated freeze.

## Images



### Western Blotting

**Image 1.** Western Blot analysis of 293 cells using XRCC2 Polyclonal Antibody