

Datasheet for ABIN7185726
anti-MARCH3 antibody (Internal Region)



[Go to Product page](#)

1 Image

Overview

Quantity:	100 µg
Target:	MARCH3
Binding Specificity:	Internal Region
Reactivity:	Human
Host:	Rabbit
Clonality:	Polyclonal
Conjugate:	This MARCH3 antibody is un-conjugated
Application:	Western Blotting (WB), ELISA, Immunohistochemistry (IHC)

Product Details

Immunogen:	Synthesized peptide derived from the Internal region of Human 40605.
Isotype:	IgG
Cross-Reactivity:	Human, Monkey, Mouse, Rat
Purification:	The antibody was affinity-purified from rabbit antiserum by affinity-chromatography using epitope-specific immunogen.

Target Details

Target:	MARCH3
Alternative Name:	MARCH3 (MARCH3 Products)
Background:	E3 ubiquitin protein ligase MARCH3 antibody, E3 ubiquitin-protein ligase MARCH3 antibody,

Target Details

FLJ20096 antibody, March 3 antibody, MARCH III antibody, MARCH-III antibody, March3 antibody, MARH3_HUMAN antibody, Membrane associated RING CH protein III antibody, Membrane associated ring finger (C3HC4) 3 antibody, Membrane associated ring finger (C3HC4) 3, E3 ubiquitin protein ligase antibody, Membrane associated RING finger protein 3 antibody, Membrane-associated RING finger protein 3 antibody, Membrane-associated RING-CH protein III antibody, MGC48332 antibody, RING finger protein 173 antibody, RNF173 antibody

UniProt: [Q86UD3](#)

Application Details

Application Notes: WB:1:500-1:2000, IHC:1:100-1:300, ELISA:1:40000,

Restrictions: For Research Use only

Handling

Format: Liquid

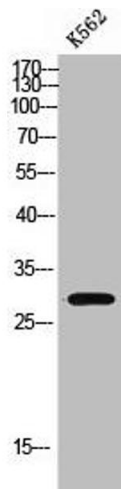
Buffer: Liquid in PBS containing 50 % glycerol, 0.5 % BSA and 0.02 % sodium azide.

Preservative: Sodium azide

Precaution of Use: This product contains Sodium azide: a POISONOUS AND HAZARDOUS SUBSTANCE which should be handled by trained staff only.

Storage: -20 °C,-80 °C

Storage Comment: Upon receipt, store at -20°C or -80°C. Avoid repeated freeze.



Western Blotting

Image 1. Western Blot analysis of K562 cells using MARCH3 Polyclonal Antibody