



[Go to Product page](#)

Datasheet for ABIN7185728

anti-SLC22A3 antibody (Internal Region)

1 Image

Overview

Quantity:	100 µg
Target:	SLC22A3 (OCT3)
Binding Specificity:	Internal Region
Reactivity:	Human
Host:	Rabbit
Clonality:	Polyclonal
Conjugate:	This SLC22A3 antibody is un-conjugated
Application:	Western Blotting (WB), ELISA

Product Details

Immunogen:	Synthesized peptide derived from the Internal region of Human 40819.
Isotype:	IgG
Cross-Reactivity:	Human
Purification:	The antibody was affinity-purified from rabbit antiserum by affinity-chromatography using epitope-specific immunogen.

Target Details

Target:	SLC22A3 (OCT3)
Alternative Name:	SLC22A3 (OCT3 Products)
Background:	EMT antibody, EMT organic cation transporter 3 antibody, EMTH antibody, Extraneuronal

Target Details

monoamine transporter antibody, OCT 3 antibody, OCT3 antibody, Orct 3 antibody, Orct3 antibody, Organic cation transporter 3 antibody, S22A3_HUMAN antibody, SLC22 A3 antibody, SLC22A 3 antibody, Slc22a3 antibody, Solute carrier family 22 (extraneuronal monoamine transporter) member 3 antibody, Solute carrier family 22 (organic cation transporter) member 3 antibody, Solute carrier family 22 member 3 antibody

UniProt: [O75751](#)

Application Details

Application Notes: WB:1:500-1:2000, ELISA:1:10000,

Restrictions: For Research Use only

Handling

Format: Liquid

Buffer: Liquid in PBS containing 50 % glycerol, 0.5 % BSA and 0.02 % sodium azide.

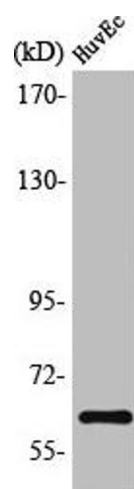
Preservative: Sodium azide

Precaution of Use: This product contains Sodium azide: a POISONOUS AND HAZARDOUS SUBSTANCE which should be handled by trained staff only.

Storage: -20 °C,-80 °C

Storage Comment: Upon receipt, store at -20°C or -80°C. Avoid repeated freeze.

Images



Western Blotting

Image 1. Western Blot analysis of HT29 cells using OCT3 Polyclonal Antibody