

Datasheet for ABIN7185748

anti-ABCC12 antibody (Internal Region)[Go to Product page](#)**1** Image

Overview

Quantity:	100 µg
Target:	ABCC12
Binding Specificity:	Internal Region
Reactivity:	Human
Host:	Rabbit
Clonality:	Polyclonal
Conjugate:	This ABCC12 antibody is un-conjugated
Application:	Western Blotting (WB), ELISA

Product Details

Immunogen:	Synthesized peptide derived from the Internal region of Human ABCC12.
Isotype:	IgG
Cross-Reactivity:	Human
Purification:	The antibody was affinity-purified from rabbit antiserum by affinity-chromatography using epitope-specific immunogen.

Target Details

Target:	ABCC12
Alternative Name:	ABCC12 (ABCC12 Products)
Background:	4930467B22Rik antibody, ABCC 12 antibody, Abcc12 antibody, ATP binding cassette sub family

Target Details

C (CFTR MRP) member 12 antibody, ATP binding cassette protein C12 antibody, ATP binding cassette transporter sub family C member 12 antibody, ATP binding cassette, sub family C, member 12 antibody, ATP-binding cassette sub-family C member 12 antibody, MGC27071 antibody, MRP9 antibody, MRP9_HUMAN antibody, Multidrug resistance associated protein 9 antibody, Multidrug resistance-associated protein 9 antibody

UniProt: [Q96J65](#)

Application Details

Application Notes: WB:1:500-1:2000, ELISA:1:20000,

Restrictions: For Research Use only

Handling

Format: Liquid

Buffer: Liquid in PBS containing 50 % glycerol, 0.5 % BSA and 0.02 % sodium azide.

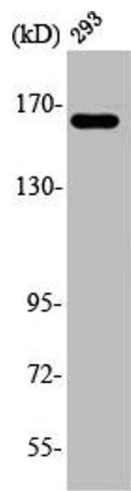
Preservative: Sodium azide

Precaution of Use: This product contains Sodium azide: a POISONOUS AND HAZARDOUS SUBSTANCE which should be handled by trained staff only.

Storage: -20 °C,-80 °C

Storage Comment: Upon receipt, store at -20°C or -80°C. Avoid repeated freeze.

Images



Western Blotting

Image 1. Western Blot analysis of HuvEc cells using ABCC12 Polyclonal Antibody