



Datasheet for ABIN7185749
anti-ABCC13 antibody (Internal Region)



[Go to Product page](#)

2 Images

Overview

| | |
|----------------------|--|
| Quantity: | 100 µg |
| Target: | ABCC13 |
| Binding Specificity: | Internal Region |
| Reactivity: | Human |
| Host: | Rabbit |
| Clonality: | Polyclonal |
| Conjugate: | This ABCC13 antibody is un-conjugated |
| Application: | Western Blotting (WB), Immunohistochemistry (IHC), ELISA |

Product Details

| | |
|-------------------|---|
| Immunogen: | Synthesized peptide derived from the Internal region of Human ABCC13. |
| Isotype: | IgG |
| Cross-Reactivity: | Human |
| Purification: | The antibody was affinity-purified from rabbit antiserum by affinity-chromatography using epitope-specific immunogen. |

Target Details

| | |
|-------------------|---|
| Target: | ABCC13 |
| Alternative Name: | ABCC13 (ABCC13 Products) |
| Background: | ABCC13, C21orf73, PRED6, Putative ATP-binding cassette sub-family C member 13 |

Target Details

UniProt: [Q9NSE7](#)

Application Details

Application Notes: WB:1:500-1:2000, IHC:1:100-1:300, ELISA:1:40000,

Restrictions: For Research Use only

Handling

Format: Liquid

Buffer: Liquid in PBS containing 50 % glycerol, 0.5 % BSA and 0.02 % sodium azide.

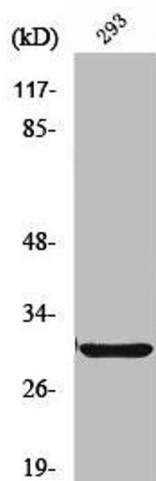
Preservative: Sodium azide

Precaution of Use: This product contains Sodium azide: a POISONOUS AND HAZARDOUS SUBSTANCE which should be handled by trained staff only.

Storage: -20 °C,-80 °C

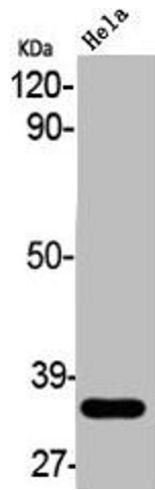
Storage Comment: Upon receipt, store at -20°C or -80°C. Avoid repeated freeze.

Images



Western Blotting

Image 1. Western Blot analysis of HT29 cells using ABCC13 Polyclonal Antibody



Western Blotting

Image 2. Western Blot analysis of HELA cells using ABCC13 Polyclonal Antibody