



[Go to Product page](#)

Datasheet for ABIN7185759

anti-EPHX4 antibody (Internal Region)

1 Image

Overview

Quantity:	100 µg
Target:	EPHX4
Binding Specificity:	Internal Region
Reactivity:	Human
Host:	Rabbit
Clonality:	Polyclonal
Conjugate:	This EPHX4 antibody is un-conjugated
Application:	Western Blotting (WB), ELISA

Product Details

Immunogen:	Synthesized peptide derived from the Internal region of Human ABHD7.
Isotype:	IgG
Cross-Reactivity:	Human, Mouse
Purification:	The antibody was affinity-purified from rabbit antiserum by affinity-chromatography using epitope-specific immunogen.

Target Details

Target:	EPHX4
Alternative Name:	EPHX4 (EPHX4 Products)
Background:	ABHD7 antibody, Abhydrolase domain containing 7 antibody, Abhydrolase domain-containing

Target Details

protein 7 antibody, Ephx4 antibody, EPHX4_HUMAN antibody, EPHXRP antibody, Epoxide hydrolase 4 antibody, Epoxide hydrolase-related protein antibody

UniProt: [Q8IUS5](#)

Application Details

Application Notes: WB:1:500-1:2000, ELISA:1:40000,

Restrictions: For Research Use only

Handling

Format: Liquid

Buffer: Liquid in PBS containing 50 % glycerol, 0.5 % BSA and 0.02 % sodium azide.

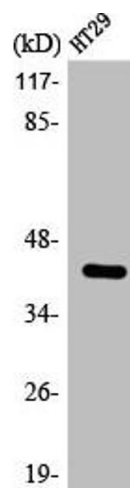
Preservative: Sodium azide

Precaution of Use: This product contains Sodium azide: a POISONOUS AND HAZARDOUS SUBSTANCE which should be handled by trained staff only.

Storage: -20 °C,-80 °C

Storage Comment: Upon receipt, store at -20°C or -80°C. Avoid repeated freeze.

Images



Western Blotting

Image 1. Western Blot analysis of HT29 cells using ABHD7 Polyclonal Antibody