



[Go to Product page](#)

Datasheet for ABIN7185800
anti-ADD2 antibody (Internal Region)

2 Images

Overview

Quantity:	100 µg
Target:	ADD2
Binding Specificity:	Internal Region
Reactivity:	Human
Host:	Rabbit
Clonality:	Polyclonal
Conjugate:	This ADD2 antibody is un-conjugated
Application:	Western Blotting (WB), ELISA, Immunofluorescence (IF)

Product Details

Immunogen:	Synthesized peptide derived from the Internal region of Human Adducin beta.
Isotype:	IgG
Cross-Reactivity:	Human, Mouse, Rat
Purification:	The antibody was affinity-purified from rabbit antiserum by affinity-chromatography using epitope-specific immunogen.

Target Details

Target:	ADD2
Alternative Name:	ADD2 (ADD2 Products)
Background:	ADD 2 antibody, ADD2 antibody, ADDB antibody, ADDB_HUMAN antibody, Adducin 2 (beta)

Target Details

antibody, Adducin2 antibody, Beta adducin antibody, Beta-adducin antibody, Erythrocyte adducin subunit beta antibody, OTTHUMP00000203378 antibody, OTTHUMP00000203908 antibody

UniProt: [P35612](#)

Pathways: [Regulation of Actin Filament Polymerization](#)

Application Details

Application Notes: WB:1:500-1:2000, IF:1:200-1:1000, ELISA:1:5000,

Restrictions: For Research Use only

Handling

Format: Liquid

Buffer: Liquid in PBS containing 50 % glycerol, 0.5 % BSA and 0.02 % sodium azide.

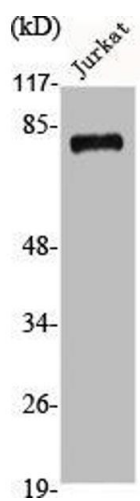
Preservative: Sodium azide

Precaution of Use: This product contains Sodium azide: a POISONOUS AND HAZARDOUS SUBSTANCE which should be handled by trained staff only.

Storage: -20 °C,-80 °C

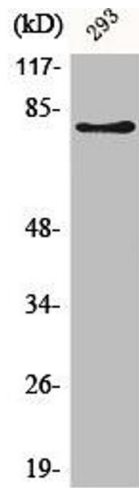
Storage Comment: Upon receipt, store at -20°C or -80°C. Avoid repeated freeze.

Images



Western Blotting

Image 1. Western Blot analysis of Jurkat cells using Adducin β Polyclonal Antibody



Western Blotting

Image 2. Western Blot analysis of 293 cells using Adducin β Polyclonal Antibody