



[Go to Product page](#)

Datasheet for ABIN7185826

anti-ALDH3B1 antibody (Internal Region)

1 Image

Overview

Quantity:	100 µg
Target:	ALDH3B1
Binding Specificity:	Internal Region
Reactivity:	Human
Host:	Rabbit
Clonality:	Polyclonal
Conjugate:	This ALDH3B1 antibody is un-conjugated
Application:	Western Blotting (WB), ELISA, Immunohistochemistry (IHC)

Product Details

Immunogen:	Synthesized peptide derived from the Internal region of Human ALDH3B1.
Isotype:	IgG
Cross-Reactivity:	Human
Purification:	The antibody was affinity-purified from rabbit antiserum by affinity-chromatography using epitope-specific immunogen.

Target Details

Target:	ALDH3B1
Alternative Name:	ALDH3B1 (ALDH3B1 Products)
Background:	ALDH3B1 antibody, ALDH7Aldehyde dehydrogenase family 3 member B1 antibody, EC 1.2.1.28

Target Details

antibody, EC 1.2.1.5 antibody, EC 1.2.1.7 antibody, Aldehyde dehydrogenase 7 antibody

UniProt: [P43353](#)

Pathways: [Monocarboxylic Acid Catabolic Process](#)

Application Details

Application Notes: WB:1:500-1:2000, IHC:1:100-1:300, ELISA:1:40000,

Restrictions: For Research Use only

Handling

Format: Liquid

Buffer: Liquid in PBS containing 50 % glycerol, 0.5 % BSA and 0.02 % sodium azide.

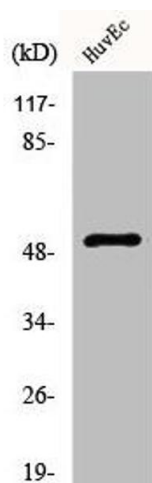
Preservative: Sodium azide

Precaution of Use: This product contains Sodium azide: a POISONOUS AND HAZARDOUS SUBSTANCE which should be handled by trained staff only.

Storage: -20 °C,-80 °C

Storage Comment: Upon receipt, store at -20°C or -80°C. Avoid repeated freeze.

Images



Western Blotting

Image 1. Western Blot analysis of HuvEc cells using ALDH3B1 Polyclonal Antibody