

Datasheet for ABIN7185885
anti-SH2B2 antibody (Internal Region)[Go to Product page](#)

1 Image

Overview

Quantity:	100 µg
Target:	SH2B2
Binding Specificity:	Internal Region
Reactivity:	Human
Host:	Rabbit
Clonality:	Polyclonal
Conjugate:	This SH2B2 antibody is un-conjugated
Application:	ELISA, Western Blotting (WB)

Product Details

Immunogen:	Synthesized peptide derived from the Internal region of Human APS.
Isotype:	IgG
Cross-Reactivity:	Human, Mouse, Rat
Purification:	The antibody was affinity-purified from rabbit antiserum by affinity-chromatography using epitope-specific immunogen.

Target Details

Target:	SH2B2
Alternative Name:	SH2B2 (SH2B2 Products)
Background:	SH2B2 antibody, APS antibody, SH2B adapter protein 2 antibody, Adapter protein with

Target Details

pleckstrin homology and Src homology 2 domains antibody, SH2 and PH domain-containing adapter protein APS antibody

UniProt: [O14492](#)

Pathways: [Carbohydrate Homeostasis](#), [Brown Fat Cell Differentiation](#)

Application Details

Application Notes: WB:1:500-1:2000, ELISA:1:20000,

Restrictions: For Research Use only

Handling

Format: Liquid

Buffer: Liquid in PBS containing 50 % glycerol, 0.5 % BSA and 0.02 % sodium azide.

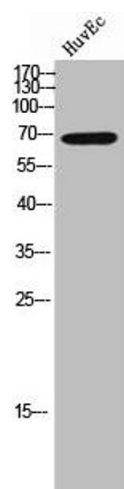
Preservative: Sodium azide

Precaution of Use: This product contains Sodium azide: a POISONOUS AND HAZARDOUS SUBSTANCE which should be handled by trained staff only.

Storage: -20 °C,-80 °C

Storage Comment: Upon receipt, store at -20°C or -80°C. Avoid repeated freeze.

Images



Western Blotting

Image 1. Western Blot analysis of HuvEc cells using APS Polyclonal Antibody