



[Go to Product page](#)

Datasheet for ABIN7185911

anti-ARHGEF1 antibody (Internal Region)

1 Image

Overview

Quantity:	100 µg
Target:	ARHGEF1
Binding Specificity:	Internal Region
Reactivity:	Human
Host:	Rabbit
Clonality:	Polyclonal
Conjugate:	This ARHGEF1 antibody is un-conjugated
Application:	Western Blotting (WB), ELISA, Immunohistochemistry (IHC)

Product Details

Immunogen:	Synthesized peptide derived from the Internal region of Human ARHGEF10.
Isotype:	IgG
Cross-Reactivity:	Human, Monkey
Purification:	The antibody was affinity-purified from rabbit antiserum by affinity-chromatography using epitope-specific immunogen.

Target Details

Target:	ARHGEF1
Alternative Name:	ARHGEF1 (ARHGEF1 Products)
Background:	ARHGA_HUMAN antibody, ARHGEF10 antibody, DKFZp686H0726 antibody, GEF10 antibody,

Target Details

KIAA0294 antibody, MGC131664 antibody, Rho guanine nucleotide exchange factor (GEF) 10 antibody, Rho guanine nucleotide exchange factor 10 antibody

UniProt: [O15013](#)

Pathways: [Neurotrophin Signaling Pathway](#), [Regulation of G-Protein Coupled Receptor Protein Signaling](#), [Thromboxane A2 Receptor Signaling](#)

Application Details

Application Notes: WB:1:500-1:2000, IHC:1:100-1:300, ELISA:1:20000,

Restrictions: For Research Use only

Handling

Format: Liquid

Buffer: Liquid in PBS containing 50 % glycerol, 0.5 % BSA and 0.02 % sodium azide.

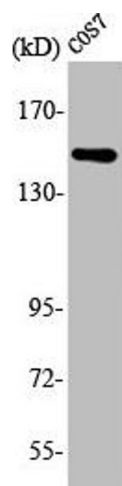
Preservative: Sodium azide

Precaution of Use: This product contains Sodium azide: a POISONOUS AND HAZARDOUS SUBSTANCE which should be handled by trained staff only.

Storage: -20 °C,-80 °C

Storage Comment: Upon receipt, store at -20°C or -80°C. Avoid repeated freeze.

Images



Western Blotting

Image 1. Western Blot analysis of COS7 cells using ARHGEF10 Polyclonal Antibody