



[Go to Product page](#)

Datasheet for ABIN7185913

anti-ARHGEF19 antibody (Internal Region)

1 Image

Overview

Quantity:	100 µg
Target:	ARHGEF19
Binding Specificity:	Internal Region
Reactivity:	Human
Host:	Rabbit
Clonality:	Polyclonal
Conjugate:	This ARHGEF19 antibody is un-conjugated
Application:	ELISA, Immunohistochemistry (IHC), Western Blotting (WB)

Product Details

Immunogen:	Synthesized peptide derived from the Internal region of Human ARHGEF19.
Isotype:	IgG
Cross-Reactivity:	Human
Purification:	The antibody was affinity-purified from rabbit antiserum by affinity-chromatography using epitope-specific immunogen.

Target Details

Target:	ARHGEF19
Alternative Name:	ARHGEF19 (ARHGEF19 Products)
Background:	ARHGEF19Rho guanine nucleotide exchange factor 19 antibody, Ephexin-2 antibody

Target Details

UniProt: [Q8IW93](#)

Application Details

Application Notes: WB:1:500-1:2000, IHC:1:100-1:300, ELISA:1:20000,

Restrictions: For Research Use only

Handling

Format: Liquid

Buffer: Liquid in PBS containing 50 % glycerol, 0.5 % BSA and 0.02 % sodium azide.

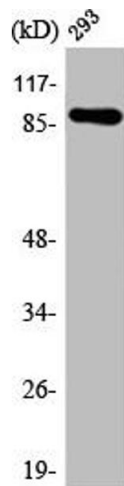
Preservative: Sodium azide

Precaution of Use: This product contains Sodium azide: a POISONOUS AND HAZARDOUS SUBSTANCE which should be handled by trained staff only.

Storage: -20 °C,-80 °C

Storage Comment: Upon receipt, store at -20°C or -80°C. Avoid repeated freeze.

Images



Western Blotting

Image 1. Western Blot analysis of 293 cells using ARHGEF19 Polyclonal Antibody