



[Go to Product page](#)

Datasheet for ABIN7185914

anti-ARMCX2 antibody (Internal Region)

2 Images

Overview

| | |
|----------------------|---|
| Quantity: | 100 µg |
| Target: | ARMCX2 |
| Binding Specificity: | Internal Region |
| Reactivity: | Human |
| Host: | Rabbit |
| Clonality: | Polyclonal |
| Conjugate: | This ARMCX2 antibody is un-conjugated |
| Application: | ELISA, Western Blotting (WB), Immunohistochemistry (IHC), Immunofluorescence (IF) |

Product Details

| | |
|-------------------|---|
| Immunogen: | Synthesized peptide derived from the Internal region of Human ARMCX2. |
| Isotype: | IgG |
| Cross-Reactivity: | Human, Mouse, Rat |
| Purification: | The antibody was affinity-purified from rabbit antiserum by affinity-chromatography using epitope-specific immunogen. |

Target Details

| | |
|-------------------|---|
| Target: | ARMCX2 |
| Alternative Name: | ARMCX2 (ARMCX2 Products) |
| Background: | ALEX 2 antibody, ALEX2 antibody, ARM protein lost in epithelial cancers on chromosome X 2 |

Target Details

antibody, Armadillo repeat containing X linked protein 2 antibody, Armadillo repeat containing, X linked 2 antibody, Armadillo repeat protein ALEX2 antibody, Armadillo repeat-containing X-linked protein 2 antibody, ARM CX 2 antibody, ARM CX2 antibody, ARM X2_HUMAN antibody, GASP9 antibody, KIAA0512 antibody, MGC13343 antibody, MGC8742 antibody, Protein ALEX2 antibody

UniProt: [Q7L311](#)

Application Details

Application Notes: WB:1:500-1:2000, IHC:1:100-1:300, IF:1:200-1:1000, ELISA:1:20000,

Restrictions: For Research Use only

Handling

Format: Liquid

Buffer: Liquid in PBS containing 50 % glycerol, 0.5 % BSA and 0.02 % sodium azide.

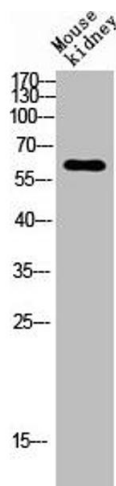
Preservative: Sodium azide

Precaution of Use: This product contains Sodium azide: a POISONOUS AND HAZARDOUS SUBSTANCE which should be handled by trained staff only.

Storage: -20 °C,-80 °C

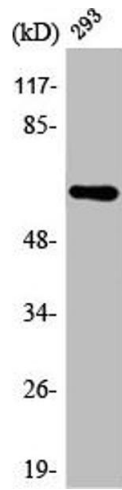
Storage Comment: Upon receipt, store at -20°C or -80°C. Avoid repeated freeze.

Images



Western Blotting

Image 1. Western blot analysis of Mouse-kidney lysis using ARM CX2 antibody.



Western Blotting

Image 2. Western Blot analysis of 293 cells using ARM CX2 Polyclonal Antibody