



[Go to Product page](#)

Datasheet for ABIN7185917

anti-ARRDC1 antibody (Internal Region)

2 Images

Overview

Quantity:	100 µg
Target:	ARRDC1
Binding Specificity:	Internal Region
Reactivity:	Human
Host:	Rabbit
Clonality:	Polyclonal
Conjugate:	This ARRDC1 antibody is un-conjugated
Application:	Western Blotting (WB), ELISA

Product Details

Immunogen:	Synthesized peptide derived from the Internal region of Human Arrdc1.
Isotype:	IgG
Cross-Reactivity:	Human, Mouse, Rat
Purification:	The antibody was affinity-purified from rabbit antiserum by affinity-chromatography using epitope-specific immunogen.

Target Details

Target:	ARRDC1
Alternative Name:	ARRDC1 (ARRDC1 Products)
Background:	ARRD1_HUMAN antibody, ARRDC 1 antibody, ARRDC1 antibody, Arrestin domain containing 1

Target Details

antibody, Arrestin domain containing protein 1 antibody, Arrestin domain-containing protein 1 antibody, MGC40555 antibody, OTTHUMP00000022707 antibody, OTTHUMP00000022709 antibody, RP11-48C7.5 antibody

UniProt: [Q8N5I2](#)

Application Details

Application Notes: WB:1:500-1:2000, ELISA:1:20000,

Restrictions: For Research Use only

Handling

Format: Liquid

Buffer: Liquid in PBS containing 50 % glycerol, 0.5 % BSA and 0.02 % sodium azide.

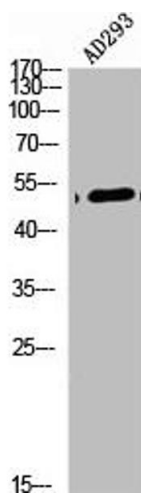
Preservative: Sodium azide

Precaution of Use: This product contains Sodium azide: a POISONOUS AND HAZARDOUS SUBSTANCE which should be handled by trained staff only.

Storage: -20 °C,-80 °C

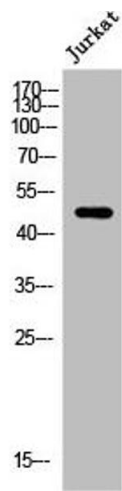
Storage Comment: Upon receipt, store at -20°C or -80°C. Avoid repeated freeze.

Images



Western Blotting

Image 1. Western Blot analysis of AD293 cells using Arrdc1 Polyclonal Antibody



Western Blotting

Image 2. Western Blot analysis of Jurkat cells using Arrdc1 Polyclonal Antibody