



[Go to Product page](#)

Datasheet for ABIN7185928

## anti-ACER1 antibody (Internal Region)

### 1 Image

#### Overview

Quantity:	100 µg
Target:	ACER1
Binding Specificity:	Internal Region
Reactivity:	Human
Host:	Rabbit
Clonality:	Polyclonal
Conjugate:	This ACER1 antibody is un-conjugated
Application:	Western Blotting (WB), ELISA

#### Product Details

Immunogen:	Synthesized peptide derived from the Internal region of Human ASAH3. at AA range: 100-180
Isotype:	IgG
Cross-Reactivity:	Human
Purification:	The antibody was affinity-purified from rabbit antiserum by affinity-chromatography using epitope-specific immunogen.

#### Target Details

Target:	ACER1
Alternative Name:	ACER1 ( <a href="#">ACER1 Products</a> )
Background:	Acer1 antibody, ACER1_HUMAN antibody, Acylsphingosine deacylase 3 antibody, Alkaline

## Target Details

CDase 1 antibody, Alkaline ceramidase 1 antibody, Alkaline ceramidase antibody, AlkCDase 1 antibody, ALKCDase1 antibody, ASAH 3 antibody, MGC138327 antibody, MGC138329 antibody, N acylsphingosine amidohydrolase (alkaline ceramidase) 3 antibody, N acylsphingosine amidohydrolase 3 alkaline ceramidase antibody, N acylsphingosine amidohydrolase 3 antibody, N-acylsphingosine amidohydrolase 3 antibody

UniProt: [Q8TDN7](#)

## Application Details

Application Notes: WB:1:500-1:2000, ELISA:1:10000,

Restrictions: For Research Use only

## Handling

Format: Liquid

Buffer: Liquid in PBS containing 50 % glycerol, 0.5 % BSA and 0.02 % sodium azide.

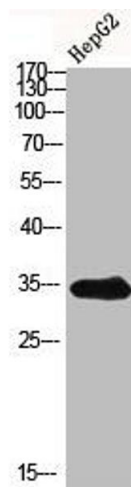
Preservative: Sodium azide

Precaution of Use: This product contains Sodium azide: a POISONOUS AND HAZARDOUS SUBSTANCE which should be handled by trained staff only.

Storage: -20 °C,-80 °C

Storage Comment: Upon receipt, store at -20°C or -80°C. Avoid repeated freeze.

## Images



### Western Blotting

**Image 1.** Western blot analysis of HepG2 using ASAH3 antibody.. Secondary antibody was diluted at 1:20000