



[Go to Product page](#)

Datasheet for ABIN7186008

anti-BMP8B antibody (Internal Region)

1 Image

Overview

Quantity:	100 µg
Target:	BMP8B (BMP8)
Binding Specificity:	Internal Region
Reactivity:	Human
Host:	Rabbit
Clonality:	Polyclonal
Conjugate:	This BMP8B antibody is un-conjugated
Application:	Western Blotting (WB), ELISA

Product Details

Immunogen:	Synthesized peptide derived from the Internal region of Human BMP-8B.
Isotype:	IgG
Cross-Reactivity:	Human
Purification:	The antibody was affinity-purified from rabbit antiserum by affinity-chromatography using epitope-specific immunogen.

Target Details

Target:	BMP8B (BMP8)
Alternative Name:	BMP8B (BMP8 Products)
Background:	BMP-8 antibody, BMP-8B antibody, BMP8 antibody, Bmp8b antibody, BMP8B_HUMAN antibody,

Target Details

bone morphogenetic protein 8 (osteogenic protein 2) antibody, Bone morphogenetic protein 8 antibody, Bone morphogenetic protein 8B antibody, dJ118J21.1 (bone morphogenetic protein 8 (osteogenic protein 2)) antibody, OP-2 antibody, OP2 antibody, Osteogenic protein 2 antibody

UniProt: [P34820](#)

Application Details

Application Notes: WB:1:500-1:2000, ELISA:1:40000,

Restrictions: For Research Use only

Handling

Format: Liquid

Buffer: Liquid in PBS containing 50 % glycerol, 0.5 % BSA and 0.02 % sodium azide.

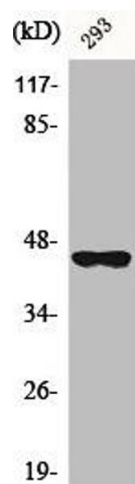
Preservative: Sodium azide

Precaution of Use: This product contains Sodium azide: a POISONOUS AND HAZARDOUS SUBSTANCE which should be handled by trained staff only.

Storage: -20 °C,-80 °C

Storage Comment: Upon receipt, store at -20°C or -80°C. Avoid repeated freeze.

Images



Western Blotting

Image 1. Western Blot analysis of A549 cells using BMP-8B Polyclonal Antibody