



[Go to Product page](#)

Datasheet for ABIN7186041

anti-C1QBP antibody (Internal Region)

1 Image

Overview

Quantity:	100 µg
Target:	C1QBP
Binding Specificity:	Internal Region
Reactivity:	Human
Host:	Rabbit
Clonality:	Polyclonal
Conjugate:	This C1QBP antibody is un-conjugated
Application:	Western Blotting (WB), Immunohistochemistry (IHC), ELISA

Product Details

Immunogen:	Synthesized peptide derived from the Internal region of Human C1QBP.
Isotype:	IgG
Cross-Reactivity:	Human, Mouse, Rat
Purification:	The antibody was affinity-purified from rabbit antiserum by affinity-chromatography using epitope-specific immunogen.

Target Details

Target:	C1QBP
Alternative Name:	C1QBP (C1QBP Products)
Background:	ASF/SF2 associated protein p32 antibody, C1q globular domain binding protein antibody,

Target Details

C1qBP antibody, C1QBP_HUMAN antibody, Complement component 1 q subcomponent binding protein antibody, Complement component 1 Q subcomponent binding protein mitochondrial antibody, Complement component 1 Q subcomponent-binding protein, mitochondrial antibody, GC1Q R antibody, GC1q R protein antibody, GC1q-R protein antibody, GC1QBP antibody, GC1QR antibody, globular domain of, C1q, receptor for antibody, Glycoprotein gC1qBP antibody, HABP 1 antibody, HABP1 antibody, Hyaluronan binding protein 1 antibody, Hyaluronan-binding protein 1 antibody, Mitochondrial matrix protein p32 antibody, p32 antibody, p32 splicing factor antibody, p33 antibody, Pre mrna splicing factor SF2 P32 subunit precursor antibody, SF2p32 antibody, Splicing factor SF2 associated protein antibody

UniProt: [Q07021](#)

Pathways: [Ribonucleoprotein Complex Subunit Organization](#), [Ribosome Assembly](#)

Application Details

Application Notes: WB:1:500-1:2000, IHC:1:100-1:300, ELISA:1:40000,

Restrictions: For Research Use only

Handling

Format: Liquid

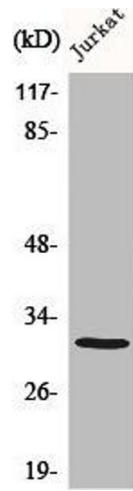
Buffer: Liquid in PBS containing 50 % glycerol, 0.5 % BSA and 0.02 % sodium azide.

Preservative: Sodium azide

Precaution of Use: This product contains Sodium azide: a POISONOUS AND HAZARDOUS SUBSTANCE which should be handled by trained staff only.

Storage: -20 °C,-80 °C

Storage Comment: Upon receipt, store at -20°C or -80°C. Avoid repeated freeze.



Western Blotting

Image 1. Western Blot analysis of various cells using C1QBP Polyclonal Antibody diluted at 1:1000