



[Go to Product page](#)

Datasheet for ABIN7186044

anti-C1S antibody (Cleaved-Arg437)

1 Image

Overview

Quantity:	100 µg
Target:	C1S
Binding Specificity:	Cleaved-Arg437
Reactivity:	Human
Host:	Rabbit
Clonality:	Polyclonal
Conjugate:	This C1S antibody is un-conjugated
Application:	Western Blotting (WB), ELISA

Product Details

Immunogen:	Synthesized peptide derived from the Internal region of Human C1s HC.
Isotype:	IgG
Cross-Reactivity:	Human
Purification:	The antibody was affinity-purified from rabbit antiserum by affinity-chromatography using epitope-specific immunogen.

Target Details

Target:	C1S
Alternative Name:	C1S (C1S Products)
Background:	Basic proline rich peptide IB 1 antibody, C1 esterase antibody, C1S antibody, C1S_HUMAN

Target Details

antibody, Complement C1s subcomponent antibody, Complement C1s subcomponent heavy chain antibody, Complement C1s subcomponent light chain antibody, Complement component 1 s subcomponent antibody, Complement component 1 subcomponent s antibody, FLJ44757 antibody

UniProt: [P09871](#)

Pathways: [Complement System](#)

Application Details

Application Notes: WB:1:500-1:2000, ELISA:1:20000,

Restrictions: For Research Use only

Handling

Format: Liquid

Buffer: Liquid in PBS containing 50 % glycerol, 0.5 % BSA and 0.02 % sodium azide.

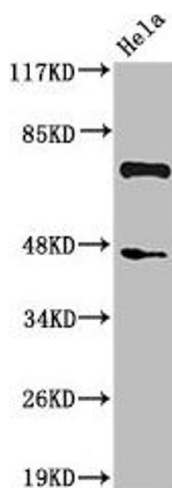
Preservative: Sodium azide

Precaution of Use: This product contains Sodium azide: a POISONOUS AND HAZARDOUS SUBSTANCE which should be handled by trained staff only.

Storage: -20 °C,-80 °C

Storage Comment: Upon receipt, store at -20°C or -80°C. Avoid repeated freeze.

Images



Western Blotting

Image 1. Western Blot analysis of HeLa cells using Cleaved-C1s HC (R437) Polyclonal Antibody