



[Go to Product page](#)

Datasheet for ABIN7186111

anti-CTSA antibody (Cleaved-Arg326)

1 Image

Overview

| | |
|----------------------|-------------------------------------|
| Quantity: | 100 µg |
| Target: | CTSA |
| Binding Specificity: | Cleaved-Arg326 |
| Reactivity: | Human |
| Host: | Rabbit |
| Clonality: | Polyclonal |
| Conjugate: | This CTSA antibody is un-conjugated |
| Application: | Western Blotting (WB), ELISA |

Product Details

| | |
|-------------------|---|
| Immunogen: | Synthesized peptide derived from the Internal region of Human Cathepsin A 32k. |
| Isotype: | IgG |
| Cross-Reactivity: | Human, Mouse |
| Purification: | The antibody was affinity-purified from rabbit antiserum by affinity-chromatography using epitope-specific immunogen. |

Target Details

| | |
|-------------------|--|
| Target: | CTSA |
| Alternative Name: | CTSA (CTSA Products) |
| Background: | Beta galactosidase 2 antibody, BETA GALACTOSIDASE PROTECTIVE PROTEIN antibody, beta- |

Target Details

galactosidase 2 antibody, beta-galactosidase protective protein antibody, betagalactosidase 2 antibody, Carboxypeptidase C antibody, Carboxypeptidase L antibody, carboxypeptidase Y-like kininase antibody, Cathepsin A antibody, Ctsa antibody, deamidase antibody, EC 3.4.16.5 antibody, Glactosialidosis antibody, GLB2 antibody, Goldberg Syndrome antibody, GSL antibody, lysosomal carboxypeptidase A antibody, Lysosomal protective protein 20 kDa chain antibody, Lysosomal protective protein antibody, Lysosomal protective protein deficiency antibody, NEURAMINIDASE BETA GALACTOSIDASE EXPRESSION, NGBE antibody, Neuraminidase deficiency with beta-galactosidase deficiency antibody, NGBE antibody, OTTHUMP00000031778 antibody, OTTHUMP00000031781 antibody, PPCA antibody, PPCA deficiency antibody, PPGB antibody, PPGB_HUMAN antibody, Protective protein cathepsin A antibody, Protective protein for beta galactosidase antibody, Protective protein for beta-galactosidase antibody, Protective protein/cathepsin A deficiency antibody, urinary kininase antibody

UniProt: [P10619](#)

Application Details

Application Notes: WB:1:500-1:2000, ELISA:1:10000,

Restrictions: For Research Use only

Handling

Format: Liquid

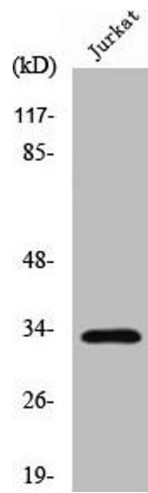
Buffer: Liquid in PBS containing 50 % glycerol, 0.5 % BSA and 0.02 % sodium azide.

Preservative: Sodium azide

Precaution of Use: This product contains Sodium azide: a POISONOUS AND HAZARDOUS SUBSTANCE which should be handled by trained staff only.

Storage: -20 °C,-80 °C

Storage Comment: Upon receipt, store at -20°C or -80°C. Avoid repeated freeze.



Western Blotting

Image 1. Western Blot analysis of Jurkat cells using Cleaved-Cathepsin A 32k (R326) Polyclonal Antibody