



[Go to Product page](#)

Datasheet for ABIN7186124

anti-Cathepsin Z antibody (Cleaved-Leu62)

1 Image

Overview

Quantity:	100 µg
Target:	Cathepsin Z (CTSZ)
Binding Specificity:	Cleaved-Leu62
Reactivity:	Human
Host:	Rabbit
Clonality:	Polyclonal
Conjugate:	This Cathepsin Z antibody is un-conjugated
Application:	Western Blotting (WB), ELISA

Product Details

Immunogen:	Synthesized peptide derived from the Internal region of Human Cathepsin Z.
Isotype:	IgG
Cross-Reactivity:	Human, Monkey
Purification:	The antibody was affinity-purified from rabbit antiserum by affinity-chromatography using epitope-specific immunogen.

Target Details

Target:	Cathepsin Z (CTSZ)
Alternative Name:	CTSZ (CTSZ Products)
Background:	Carboxypeptidase LB antibody, Cathepsin B2 antibody, Cathepsin IV antibody, Cathepsin P

Target Details

antibody, Cathepsin X antibody, Cathepsin X precursor antibody, Cathepsin Y antibody, Cathepsin Z antibody, Cathepsin Z precursor antibody, Cathepsin Z1 antibody, CathepsinP antibody, CathepsinX antibody, CathepsinZ antibody, CATZ_HUMAN antibody, CTSX antibody, CTSZ antibody, Cysteine type carboxypeptidase antibody, FLJ17088 antibody, Lysosomal carboxypeptidase B antibody, Preprocathepsin P antibody, PreprocathepsinP antibody

UniProt: [Q9UBR2](#)

Pathways: [Peptide Hormone Metabolism](#), [Regulation of Systemic Arterial Blood Pressure by Hormones](#)

Application Details

Application Notes: WB:1:500-1:2000, ELISA:1:5000,

Restrictions: For Research Use only

Handling

Format: Liquid

Buffer: Liquid in PBS containing 50 % glycerol, 0.5 % BSA and 0.02 % sodium azide.

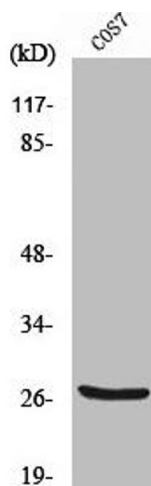
Preservative: Sodium azide

Precaution of Use: This product contains Sodium azide: a POISONOUS AND HAZARDOUS SUBSTANCE which should be handled by trained staff only.

Storage: -20 °C,-80 °C

Storage Comment: Upon receipt, store at -20°C or -80°C. Avoid repeated freeze.

Images



Western Blotting

Image 1. Western Blot analysis of COS7 cells using Cleaved-Cathepsin Z (L62) Polyclonal Antibody