



[Go to Product page](#)

Datasheet for ABIN7186140  
**anti-CD11 antibody (Internal Region)**

2 Images

Overview

Quantity:	100 µg
Target:	CD11
Binding Specificity:	Internal Region
Reactivity:	Human
Host:	Rabbit
Clonality:	Polyclonal
Conjugate:	This CD11 antibody is un-conjugated
Application:	Western Blotting (WB), ELISA

Product Details

Immunogen:	Synthesized peptide derived from the Internal region of Human CD101.
Isotype:	IgG
Cross-Reactivity:	Human
Purification:	The antibody was affinity-purified from rabbit antiserum by affinity-chromatography using epitope-specific immunogen.

Target Details

Target:	CD11
Abstract:	<a href="#">CD11 Products</a>
Background:	CD101 antibody, EWI101 antibody, IGSF2 antibody, V7Immunoglobulin superfamily member 2

## Target Details

antibody, IgSF2 antibody, Cell surface glycoprotein V7 antibody, Glu-Trp-Ile EWI motif-containing protein 101 antibody, EWI-101 antibody, CD antigen CD101 antibody

UniProt: [Q93033](#)

## Application Details

Application Notes: WB:1:500-1:2000, ELISA:1:10000,

Restrictions: For Research Use only

## Handling

Format: Liquid

Buffer: Liquid in PBS containing 50 % glycerol, 0.5 % BSA and 0.02 % sodium azide.

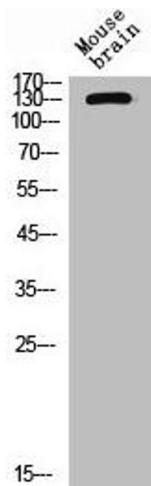
Preservative: Sodium azide

Precaution of Use: This product contains Sodium azide: a POISONOUS AND HAZARDOUS SUBSTANCE which should be handled by trained staff only.

Storage: -20 °C,-80 °C

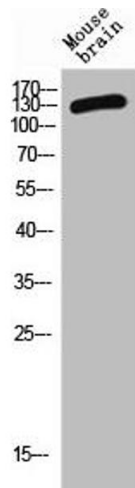
Storage Comment: Upon receipt, store at -20°C or -80°C. Avoid repeated freeze.

## Images



### Western Blotting

**Image 1.** Western Blot analysis of mouse brain cells using CD101 Polyclonal Antibody



### Western Blotting

**Image 2.** Western Blot analysis of MOUSE-BRAIN cells using CD101 Polyclonal Antibody