



Datasheet for ABIN7186181
anti-CD21 antibody (Internal Region)



[Go to Product page](#)

2 Images

Overview

Quantity:	100 µg
Target:	CD21 (CR2)
Binding Specificity:	Internal Region
Reactivity:	Human
Host:	Rabbit
Clonality:	Polyclonal
Conjugate:	This CD21 antibody is un-conjugated
Application:	Western Blotting (WB), ELISA

Product Details

Immunogen:	Synthesized peptide derived from the Internal region of Human CD21.
Isotype:	IgG
Cross-Reactivity:	Human
Purification:	The antibody was affinity-purified from rabbit antiserum by affinity-chromatography using epitope-specific immunogen.

Target Details

Target:	CD21 (CR2)
Alternative Name:	CR2 (CR2 Products)
Background:	C3DR antibody, CD 21 antibody, CD21 antibody, Complement C3d receptor 2 antibody,

Target Details

Complement C3d receptor antibody, Complement component (3d/Epstein Barr virus) receptor 2 antibody, Complement receptor type 2 antibody, CR antibody, Cr2 antibody, CR2_HUMAN antibody, CVID7 antibody, EBV receptor antibody, EBV-R antibody, Epstein Barr virus receptor antibody, Epstein-Barr virus receptor antibody, EVBR antibody, SLEB9 antibody

UniProt: [P20023](#)

Pathways: [Complement System](#)

Application Details

Application Notes: WB:1:500-1:2000, ELISA:1:10000,

Restrictions: For Research Use only

Handling

Format: Liquid

Buffer: Liquid in PBS containing 50 % glycerol, 0.5 % BSA and 0.02 % sodium azide.

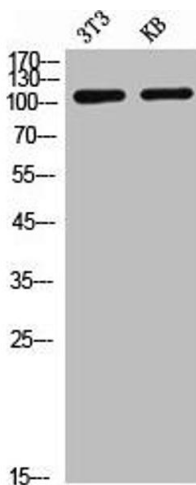
Preservative: Sodium azide

Precaution of Use: This product contains Sodium azide: a POISONOUS AND HAZARDOUS SUBSTANCE which should be handled by trained staff only.

Storage: -20 °C,-80 °C

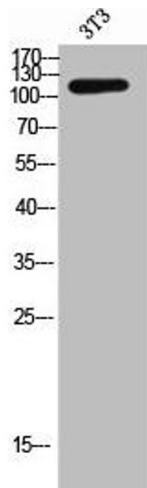
Storage Comment: Upon receipt, store at -20°C or -80°C. Avoid repeated freeze.

Images



Western Blotting

Image 1. Western Blot analysis of NIH-3T3 KB cells using CD21 Polyclonal Antibody



Western Blotting

Image 2. Western Blot analysis of 3T3 cells using CD21 Polyclonal Antibody