



[Go to Product page](#)

Datasheet for ABIN7186184

anti-Plexin C1 antibody (Internal Region)

2 Images

Overview

Quantity:	100 µg
Target:	Plexin C1 (PLXNC1)
Binding Specificity:	Internal Region
Reactivity:	Human
Host:	Rabbit
Clonality:	Polyclonal
Conjugate:	This Plexin C1 antibody is un-conjugated
Application:	Western Blotting (WB), ELISA

Product Details

Immunogen:	Synthesized peptide derived from the Internal region of Human CD232.
Isotype:	IgG
Cross-Reactivity:	Human, Mouse, Rat
Purification:	The antibody was affinity-purified from rabbit antiserum by affinity-chromatography using epitope-specific immunogen.

Target Details

Target:	Plexin C1 (PLXNC1)
Alternative Name:	PLXNC1 (PLXNC1 Products)
Background:	CD232 antibody, Plexin-C1 antibody, PLXC1_HUMAN antibody, Plxnc1 antibody, Virus-encoded

Target Details

semaphorin protein receptor antibody

UniProt: [O60486](#)

Application Details

Application Notes: WB:1:500-1:2000, ELISA:1:10000,

Restrictions: For Research Use only

Handling

Format: Liquid

Buffer: Liquid in PBS containing 50 % glycerol, 0.5 % BSA and 0.02 % sodium azide.

Preservative: Sodium azide

Precaution of Use: This product contains Sodium azide: a POISONOUS AND HAZARDOUS SUBSTANCE which should be handled by trained staff only.

Storage: -20 °C,-80 °C

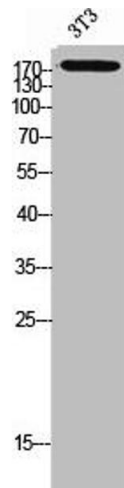
Storage Comment: Upon receipt, store at -20°C or -80°C. Avoid repeated freeze.

Images



Western Blotting

Image 1. Western Blot analysis of NIH-3T3 cells using CD232 Polyclonal Antibody



Western Blotting

Image 2. Western Blot analysis of 3T3 cells using CD232 Polyclonal Antibody