

Datasheet for ABIN7186200  
**anti-ART1 antibody (Internal Region)**[Go to Product page](#)

## 2 Images

## Overview

Quantity:	100 µg
Target:	ART1
Binding Specificity:	Internal Region
Reactivity:	Human
Host:	Rabbit
Clonality:	Polyclonal
Conjugate:	This ART1 antibody is un-conjugated
Application:	Western Blotting (WB), ELISA

## Product Details

Immunogen:	Synthesized peptide derived from the Internal region of Human CD296.
Isotype:	IgG
Cross-Reactivity:	Human
Purification:	The antibody was affinity-purified from rabbit antiserum by affinity-chromatography using epitope-specific immunogen.

## Target Details

Target:	ART1
Alternative Name:	ART1 ( <a href="#">ART1 Products</a> )
Background:	ART1GPI-linked NAD(P)(+)-arginine ADP-ribosyltransferase 1 antibody, EC 2.4.2.31 antibody,

## Target Details

ADP-ribosyltransferase C2 and C3 toxin-like 1 antibody, ARTC1 antibody, Mono(ADP-ribosyl)transferase 1 antibody, CD antigen CD296 antibody

UniProt: [P52961](#)

## Application Details

Application Notes: WB:1:500-1:2000, ELISA:1:10000,

Restrictions: For Research Use only

## Handling

Format: Liquid

Buffer: Liquid in PBS containing 50 % glycerol, 0.5 % BSA and 0.02 % sodium azide.

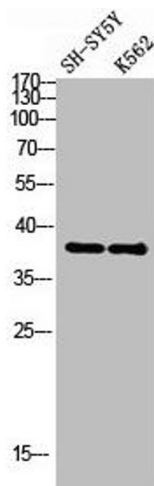
Preservative: Sodium azide

Precaution of Use: This product contains Sodium azide: a POISONOUS AND HAZARDOUS SUBSTANCE which should be handled by trained staff only.

Storage: -20 °C,-80 °C

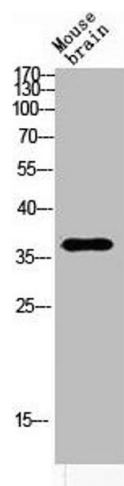
Storage Comment: Upon receipt, store at -20°C or -80°C. Avoid repeated freeze.

## Images



### Western Blotting

**Image 1.** Western Blot analysis of various cells using Antibody diluted at 1:1000. Secondary antibody was diluted at 1:20000



### Western Blotting

**Image 2.** Western blot analysis of MOUSE-BRAIN lysis using ART1 antibody. Antibody was diluted at 1:2000. Secondary antibody was diluted at 1:20000