



Datasheet for ABIN7186219

anti-PTGFRN antibody (Internal Region)



[Go to Product page](#)

2 Images

Overview

Quantity:	100 µg
Target:	PTGFRN
Binding Specificity:	Internal Region
Reactivity:	Human
Host:	Rabbit
Clonality:	Polyclonal
Conjugate:	This PTGFRN antibody is un-conjugated
Application:	Western Blotting (WB), ELISA

Product Details

Immunogen:	Synthesized peptide derived from the Internal region of Human CD315.
Isotype:	IgG
Cross-Reactivity:	Human, Mouse, Rat
Purification:	The antibody was affinity-purified from rabbit antiserum by affinity-chromatography using epitope-specific immunogen.

Target Details

Target:	PTGFRN
Alternative Name:	PTGFRN (PTGFRN Products)
Background:	CD315 antibody, CD9 partner 1 antibody, CD9P-1 antibody, CD9P1 antibody, EW1 F antibody,

Target Details

EWI-F antibody, FLJ11001 antibody, FPRP antibody, FPRP_HUMAN antibody, Glu Trp Ile EWI motif containing protein F antibody, Glu-Trp-Ile EWI motif-containing protein F antibody, KIAA1436 antibody, Prostaglandin F2 alpha receptor associated protein antibody, Prostaglandin F2 alpha receptor regulatory protein antibody, Prostaglandin F2 receptor inhibitor antibody, Prostaglandin F2 receptor negative regulator antibody, Prostaglandin F2-alpha receptor regulatory protein antibody, Prostaglandin F2-alpha receptor-associated protein antibody, Ptgfrn antibody, SMAP 6 antibody

UniProt: [Q9P2B2](#)

Application Details

Application Notes: WB:1:500-1:2000, ELISA:1:10000,

Restrictions: For Research Use only

Handling

Format: Liquid

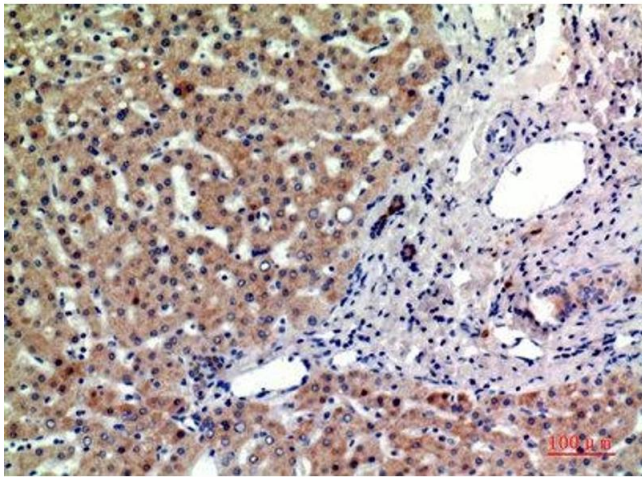
Buffer: Liquid in PBS containing 50 % glycerol, 0.5 % BSA and 0.02 % sodium azide.

Preservative: Sodium azide

Precaution of Use: This product contains Sodium azide: a POISONOUS AND HAZARDOUS SUBSTANCE which should be handled by trained staff only.

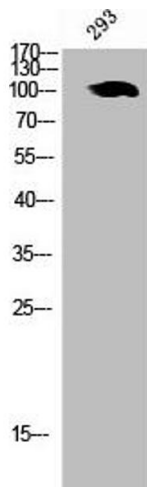
Storage: -20 °C,-80 °C

Storage Comment: Upon receipt, store at -20°C or -80°C. Avoid repeated freeze.



Immunohistochemistry

Image 1. Immunohistochemical analysis of paraffin-embedded human-liver, antibody was diluted at 1:200



Western Blotting

Image 2. Western Blot analysis of 293 cells using CD315 Polyclonal Antibody