

Datasheet for ABIN7186258  
**anti-ST6GAL1 antibody (Internal Region)**



[Go to Product page](#)

1 Image

Overview

Quantity:	100 µg
Target:	ST6GAL1
Binding Specificity:	Internal Region
Reactivity:	Human
Host:	Rabbit
Clonality:	Polyclonal
Conjugate:	This ST6GAL1 antibody is un-conjugated
Application:	Western Blotting (WB), Immunohistochemistry (IHC), ELISA

Product Details

Immunogen:	Synthesized peptide derived from the Internal region of Human CD75.
Isotype:	IgG
Cross-Reactivity:	Human, Mouse, Rat
Purification:	The antibody was affinity-purified from rabbit antiserum by affinity-chromatography using epitope-specific immunogen.

Target Details

Target:	ST6GAL1
Alternative Name:	ST6GAL1 ( <a href="#">ST6GAL1 Products</a> )
Background:	6 sialyltransferase antibody, 6-sialyltransferase 1 antibody, 6-ST 1 antibody, Alpha 2 antibody,

## Target Details

---

Alpha 2,6 ST 1 antibody, Alpha 2,6 ST antibody, B cell antigen CD75 antibody, B-cell antigen CD75 antibody, Beta galactoside alpha 2,6 sialyltransferase 1 antibody, Beta-galactoside alpha-2 antibody, CMP N acetylneuraminate beta galactosamide alpha 2,6 sialyltransferase 1 antibody, CMP-N-acetylneuraminate-beta-galactosamide-alpha-2 antibody, MGC48859 antibody, Sialyltransferase 1 (beta galactoside alpha 2,6 sialyltransferase) antibody, Sialyltransferase 1 antibody, SIAT1 antibody, SIAT1\_HUMAN antibody, ST6 beta galactosamide alpha 2,6 sialyltransferase 1 antibody, ST6Gal I antibody, ST6GAL1 antibody, ST6GalI antibody, ST6N antibody

UniProt: [P15907](#)

## Application Details

---

Application Notes: WB:1:500-1:2000, IHC:1:100-1:300, ELISA:1:40000,

Restrictions: For Research Use only

## Handling

---

Format: Liquid

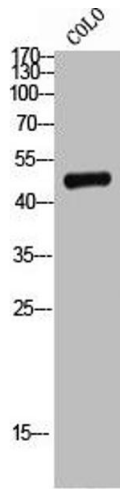
Buffer: Liquid in PBS containing 50 % glycerol, 0.5 % BSA and 0.02 % sodium azide.

Preservative: Sodium azide

Precaution of Use: This product contains Sodium azide: a POISONOUS AND HAZARDOUS SUBSTANCE which should be handled by trained staff only.

Storage: -20 °C,-80 °C

Storage Comment: Upon receipt, store at -20°C or -80°C. Avoid repeated freeze.



### Western Blotting

**Image 1.** Western Blot analysis of COLO cells using CD75 Polyclonal Antibody