



Datasheet for ABIN7186321
anti-CMKLR1 antibody (Internal Region)



[Go to Product page](#)

4 Images

Overview

Quantity:	100 µg
Target:	CMKLR1
Binding Specificity:	Internal Region
Reactivity:	Human
Host:	Rabbit
Clonality:	Polyclonal
Conjugate:	This CMKLR1 antibody is un-conjugated
Application:	Western Blotting (WB), ELISA, Immunohistochemistry (IHC), Immunofluorescence (IF)

Product Details

Immunogen:	Synthesized peptide derived from the Internal region of Human ChemR23.
Isotype:	IgG
Cross-Reactivity:	Human, Mouse, Rat
Purification:	The antibody was affinity-purified from rabbit antiserum by affinity-chromatography using epitope-specific immunogen.

Target Details

Target:	CMKLR1
Alternative Name:	CMKLR1 (CMKLR1 Products)
Background:	CHEMERINR antibody, Chemokine like receptor 1 antibody, Chemokine-like receptor 1 antibody,

Target Details

CHEMR23 antibody, CMKLR1 antibody, CML1_HUMAN antibody, DEZ antibody, G protein coupled receptor ChemR23 antibody, G protein coupled receptor DEZ antibody, G-protein coupled receptor ChemR23 antibody, G-protein coupled receptor DEZ antibody, Orphan G protein coupled receptor antibody, Orphan G protein coupled receptor Dez antibody, Resolvin E1 receptor antibody, RVER1 antibody

UniProt: [Q99788](#)

Application Details

Application Notes: WB:1:500-1:2000, IHC:1:100-1:300, IF:1:200-1:1000, ELISA:1:20000,

Restrictions: For Research Use only

Handling

Format: Liquid

Buffer: Liquid in PBS containing 50 % glycerol, 0.5 % BSA and 0.02 % sodium azide.

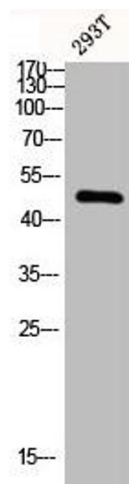
Preservative: Sodium azide

Precaution of Use: This product contains Sodium azide: a POISONOUS AND HAZARDOUS SUBSTANCE which should be handled by trained staff only.

Storage: -20 °C,-80 °C

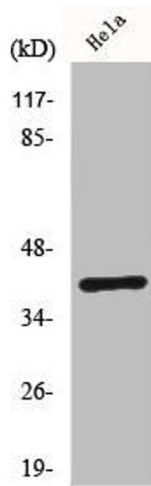
Storage Comment: Upon receipt, store at -20°C or -80°C. Avoid repeated freeze.

Images



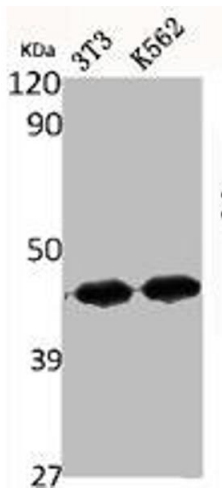
Western Blotting

Image 1. Western blot analysis of 293T lysis using ChemR23 antibody.



Western Blotting

Image 2. Western Blot analysis of HeLa cells using ChemR23 Polyclonal Antibody



Western Blotting

Image 3. Western Blot analysis of NIH-3T3 K562 cells using ChemR23 Polyclonal Antibody

Please check the [product details page](#) for more images. Overall 4 images are available for ABIN7186321.