

Datasheet for ABIN7186326
anti-Chp2 antibody (Internal Region)



[Go to Product page](#)

1 Image

Overview

Quantity:	100 µg
Target:	Chp2
Binding Specificity:	Internal Region
Reactivity:	Human
Host:	Rabbit
Clonality:	Polyclonal
Application:	Western Blotting (WB), ELISA

Product Details

Immunogen:	Synthesized peptide derived from the Internal region of Human CHP2.
Isotype:	IgG
Cross-Reactivity:	Human, Mouse, Rat
Purification:	The antibody was affinity-purified from rabbit antiserum by affinity-chromatography using epitope-specific immunogen.

Target Details

Target:	Chp2
Abstract:	Chp2 Products
Background:	CHP2 antibody, HCA520Calcineurin B homologous protein 2 antibody, Hepatocellular carcinoma-associated antigen 520 antibody

Target Details

UniProt: [O43745](#)

Application Details

Application Notes: WB:1:500-1:2000, ELISA:1:40000,

Restrictions: For Research Use only

Handling

Format: Liquid

Buffer: Liquid in PBS containing 50 % glycerol, 0.5 % BSA and 0.02 % sodium azide.

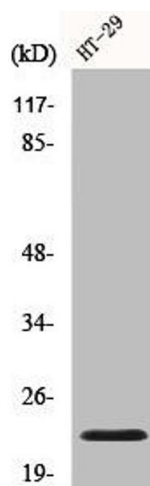
Preservative: Sodium azide

Precaution of Use: This product contains Sodium azide: a POISONOUS AND HAZARDOUS SUBSTANCE which should be handled by trained staff only.

Storage: -20 °C,-80 °C

Storage Comment: Upon receipt, store at -20°C or -80°C. Avoid repeated freeze.

Images



Western Blotting

Image 1. Western Blot analysis of Jurkat cells using CHP2 Polyclonal Antibody