



[Go to Product page](#)

Datasheet for ABIN7186348

## anti-CLK1 antibody (Internal Region)

### 3 Images

#### Overview

Quantity:	100 µg
Target:	CLK1
Binding Specificity:	Internal Region
Reactivity:	Human
Host:	Rabbit
Clonality:	Polyclonal
Conjugate:	This CLK1 antibody is un-conjugated
Application:	Western Blotting (WB), ELISA, Immunofluorescence (IF), Immunohistochemistry (IHC)

#### Product Details

Immunogen:	Synthesized peptide derived from the Internal region of Human CLK1.
Isotype:	IgG
Cross-Reactivity:	Human, Mouse
Purification:	The antibody was affinity-purified from rabbit antiserum by affinity-chromatography using epitope-specific immunogen.

#### Target Details

Target:	CLK1
Alternative Name:	CLK1 ( <a href="#">CLK1 Products</a> )
Background:	CDC like kinase 1 antibody, CDC-like kinase 1 antibody, CDC28/CDC2 like kinase antibody, CLK

## Target Details

antibody, CLK/STY antibody, Clk1 antibody, CLK1\_HUMAN antibody, Dual specificity protein kinase CLK1 antibody, Protein tyrosine kinase STY antibody, STY antibody

UniProt: [P49759](#)

## Application Details

Application Notes: WB:1:500-1:2000, IHC:1:100-1:300, IF:1:200-1:1000, ELISA:1:20000,

Restrictions: For Research Use only

## Handling

Format: Liquid

Buffer: Liquid in PBS containing 50 % glycerol, 0.5 % BSA and 0.02 % sodium azide.

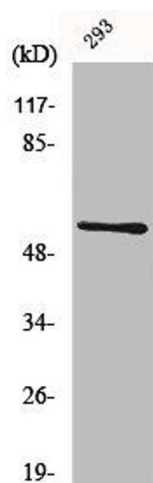
Preservative: Sodium azide

Precaution of Use: This product contains Sodium azide: a POISONOUS AND HAZARDOUS SUBSTANCE which should be handled by trained staff only.

Storage: -20 °C,-80 °C

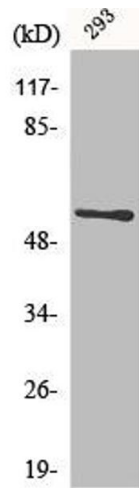
Storage Comment: Upon receipt, store at -20°C or -80°C. Avoid repeated freeze.

## Images



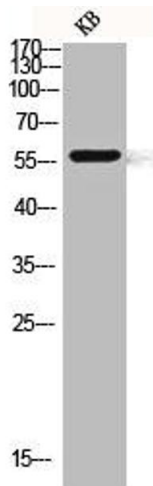
### Western Blotting

**Image 1.** Western Blot analysis of 293 cells using CLK1 Polyclonal Antibody



### Western Blotting

**Image 2.** Western Blot analysis of 293 cells using CLK1 Polyclonal Antibody



### Western Blotting

**Image 3.** Western blot analysis of KB lysis using CLK1 antibody.