



[Go to Product page](#)

Datasheet for ABIN7186365

anti-Cofilin1/2 (CFL1/2) (Internal Region) antibody

1 Image

Overview

Quantity:	100 µg
Target:	Cofilin1/2 (CFL1/2)
Binding Specificity:	Internal Region
Reactivity:	Human
Host:	Rabbit
Clonality:	Polyclonal
Conjugate:	Un-conjugated
Application:	Western Blotting (WB), Immunofluorescence (IF), ELISA

Product Details

Immunogen:	Synthesized peptide derived from the Internal region of Human Cofilin.
Isotype:	IgG
Cross-Reactivity:	Human, Mouse, Rat
Purification:	The antibody was affinity-purified from rabbit antiserum by affinity-chromatography using epitope-specific immunogen.

Target Details

Target:	Cofilin1/2 (CFL1/2)
Alternative Name:	CFL1/CFL2 (CFL1/2 Products)
Background:	CFL1, CFL, Cofilin-1, 18 kDa phosphoprotein, p18, Cofilin, non-muscle isoform, CFL2, Cofilin-2,

Target Details

Cofilin, muscle isoform

UniProt: [P23528, Q9Y281](#)

Pathways: [Tube Formation, CXCR4-mediated Signaling Events](#)

Application Details

Application Notes: WB:1:500-1:2000, IF:1:200-1:1000, ELISA:1:40000,

Restrictions: For Research Use only

Handling

Format: Liquid

Buffer: Liquid in PBS containing 50 % glycerol, 0.5 % BSA and 0.02 % sodium azide.

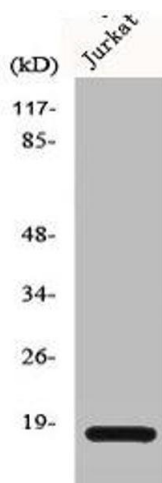
Preservative: Sodium azide

Precaution of Use: This product contains Sodium azide: a POISONOUS AND HAZARDOUS SUBSTANCE which should be handled by trained staff only.

Storage: -20 °C, -80 °C

Storage Comment: Upon receipt, store at -20°C or -80°C. Avoid repeated freeze.

Images



Western Blotting

Image 1. Western Blot analysis of HeLa cells using Cofilin Polyclonal Antibody