



[Go to Product page](#)

Datasheet for ABIN7186376

## anti-COL6A2 antibody (Internal Region)

### 1 Image

#### Overview

|                      |                                                                                   |
|----------------------|-----------------------------------------------------------------------------------|
| Quantity:            | 100 µg                                                                            |
| Target:              | COL6A2                                                                            |
| Binding Specificity: | Internal Region                                                                   |
| Reactivity:          | Human                                                                             |
| Host:                | Rabbit                                                                            |
| Clonality:           | Polyclonal                                                                        |
| Conjugate:           | This COL6A2 antibody is un-conjugated                                             |
| Application:         | Western Blotting (WB), ELISA, Immunohistochemistry (IHC), Immunofluorescence (IF) |

#### Product Details

|                   |                                                                                                                       |
|-------------------|-----------------------------------------------------------------------------------------------------------------------|
| Immunogen:        | Synthesized peptide derived from the Internal region of Human COL6A2.                                                 |
| Isotype:          | IgG                                                                                                                   |
| Cross-Reactivity: | Human, Monkey, Mouse                                                                                                  |
| Purification:     | The antibody was affinity-purified from rabbit antiserum by affinity-chromatography using epitope-specific immunogen. |

#### Target Details

|                   |                                                                                      |
|-------------------|--------------------------------------------------------------------------------------|
| Target:           | COL6A2                                                                               |
| Alternative Name: | COL6A2 ( <a href="#">COL6A2 Products</a> )                                           |
| Background:       | CO6A2_HUMAN antibody, COL6A2 antibody, Collagen alpha 2(VI) chain antibody, Collagen |

## Target Details

alpha-2(VI) chain antibody, collagen type VI alpha 2 antibody, Collagen VI alpha 2 polypeptide antibody, human mRNA for collagen VI alpha 2 C terminal globular domain antibody, PP3610 antibody

UniProt: [P12110](#)

## Application Details

Application Notes: WB:1:500-1:2000, IHC:1:100-1:300, IF:1:200-1:1000, ELISA:1:10000,

Restrictions: For Research Use only

## Handling

Format: Liquid

Buffer: Liquid in PBS containing 50 % glycerol, 0.5 % BSA and 0.02 % sodium azide.

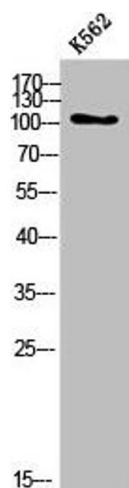
Preservative: Sodium azide

Precaution of Use: This product contains Sodium azide: a POISONOUS AND HAZARDOUS SUBSTANCE which should be handled by trained staff only.

Storage: -20 °C,-80 °C

Storage Comment: Upon receipt, store at -20°C or -80°C. Avoid repeated freeze.

## Images



### Western Blotting

**Image 1.** Western Blot analysis of K562 cells using COL6A2 Polyclonal Antibody