



[Go to Product page](#)

Datasheet for ABIN7186397

## anti-COX4I2 antibody (Internal Region)

### 1 Image

#### Overview

Quantity:	100 µg
Target:	COX4I2
Binding Specificity:	Internal Region
Reactivity:	Human
Host:	Rabbit
Clonality:	Polyclonal
Conjugate:	This COX4I2 antibody is un-conjugated
Application:	Western Blotting (WB), ELISA, Immunofluorescence (IF), Immunohistochemistry (IHC)

#### Product Details

Immunogen:	Synthesized peptide derived from the Internal region of Human COX4I2.
Isotype:	IgG
Cross-Reactivity:	Human, Mouse, Rat
Purification:	The antibody was affinity-purified from rabbit antiserum by affinity-chromatography using epitope-specific immunogen.

#### Target Details

Target:	COX4I2
Alternative Name:	COX4I2 ( <a href="#">COX4I2 Products</a> )
Background:	COX IV-2 antibody, COX4 2 antibody, COX4 antibody, COX42_HUMAN antibody, COX4B

## Target Details

antibody, Cox4i2 antibody, COX4L2 antibody, COXIV 2 antibody, Cytochrome c oxidase subunit 4 isoform 2 antibody, Cytochrome c oxidase subunit 4 isoform 2 mitochondrial [Precursor] antibody, cytochrome c oxidase subunit IV isoform 2 (lung) antibody, Cytochrome c oxidase subunit IV isoform 2 antibody, dJ857M17.2 antibody, mitochondrial antibody, RP23 106A3.3 antibody

UniProt: [Q96KJ9](#)

Pathways: [Proton Transport](#)

## Application Details

Application Notes: WB:1:500-1:2000, IHC:1:100-1:300, IF:1:200-1:1000, ELISA:1:10000,

Restrictions: For Research Use only

## Handling

Format: Liquid

Buffer: Liquid in PBS containing 50 % glycerol, 0.5 % BSA and 0.02 % sodium azide.

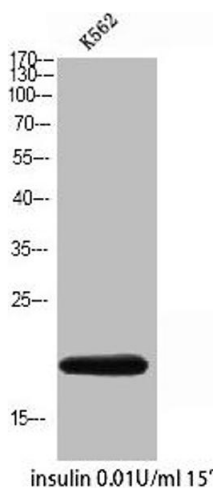
Preservative: Sodium azide

Precaution of Use: This product contains Sodium azide: a POISONOUS AND HAZARDOUS SUBSTANCE which should be handled by trained staff only.

Storage: -20 °C,-80 °C

Storage Comment: Upon receipt, store at -20°C or -80°C. Avoid repeated freeze.

## Images



### Western Blotting

**Image 1.** Western Blot analysis of K562 insulin 0.01U/mL 15' cells using COX4I2 Polyclonal Antibody.