

Datasheet for ABIN7186420

anti-Cripto-3 antibody (Internal Region)

1 Image



[Go to Product page](#)

Overview

Quantity:	100 µg
Target:	Cripto-3 (TDGF1P3)
Binding Specificity:	Internal Region
Reactivity:	Human
Host:	Rabbit
Clonality:	Polyclonal
Conjugate:	This Cripto-3 antibody is un-conjugated
Application:	Western Blotting (WB), ELISA

Product Details

Immunogen:	Synthesized peptide derived from the Internal region of Human Cripto-3.
Isotype:	IgG
Cross-Reactivity:	Human
Purification:	The antibody was affinity-purified from rabbit antiserum by affinity-chromatography using epitope-specific immunogen.

Target Details

Target:	Cripto-3 (TDGF1P3)
Alternative Name:	TDGF1P3 (TDGF1P3 Products)
Background:	TDGF1P3 antibody, CRIPTO3 antibody, TDGF2 antibody, TDGF3 antibody, Putative

Target Details

teratocarcinoma-derived growth factor 3 antibody, Cripto-3 growth factor antibody, Epidermal growth factor-like cripto protein CR3 antibody, Teratocarcinoma-derived growth factor 1 pseudogene 3 antibody

UniProt: [P51864](#)

Application Details

Application Notes: WB:1:500-1:2000, ELISA:1:10000,

Restrictions: For Research Use only

Handling

Format: Liquid

Buffer: Liquid in PBS containing 50 % glycerol, 0.5 % BSA and 0.02 % sodium azide.

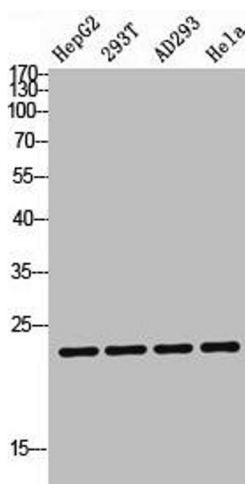
Preservative: Sodium azide

Precaution of Use: This product contains Sodium azide: a POISONOUS AND HAZARDOUS SUBSTANCE which should be handled by trained staff only.

Storage: -20 °C,-80 °C

Storage Comment: Upon receipt, store at -20°C or -80°C. Avoid repeated freeze.

Images



Western Blotting

Image 1. Western blot analysis of HepG2 293T AD293 HeLa lysis using TDGF1P3 antibody. Antibody was diluted at 1:1000. Secondary antibody was diluted at 1:20000