



[Go to Product page](#)

Datasheet for ABIN7186425
anti-CSRP1 antibody (Internal Region)

1 Image

Overview

Quantity:	100 µg
Target:	CSRP1
Binding Specificity:	Internal Region
Reactivity:	Human
Host:	Rabbit
Clonality:	Polyclonal
Conjugate:	This CSRP1 antibody is un-conjugated
Application:	Western Blotting (WB), Immunohistochemistry (IHC), ELISA

Product Details

Immunogen:	Synthesized peptide derived from the Internal region of Human CRP1.
Isotype:	IgG
Cross-Reactivity:	Human, Mouse, Rat
Purification:	The antibody was affinity-purified from rabbit antiserum by affinity-chromatography using epitope-specific immunogen.

Target Details

Target:	CSRP1
Alternative Name:	CSRP1 (CSRP1 Products)
Background:	CRP 1 antibody, CRP antibody, CRP1 antibody, CSRP 1 antibody, CSRP antibody, CSRP1

Target Details

antibody, CSRP1_HUMAN antibody, CYRP antibody, Cysteine and glycine rich protein 1 antibody, Cysteine and glycine-rich protein 1 antibody, Cysteine rich protein 1 antibody, Cysteine rich protein antibody, Cysteine-rich protein 1 antibody, D1S181E antibody, DKFZp686M148 antibody, Epididymis luminal protein 141 antibody, Epididymis secretory protein Li 286 antibody, HEL 141 antibody, HEL S 286 antibody, LIM domain protein antibody

UniProt: [P21291](#)

Application Details

Application Notes: WB:1:500-1:2000, IHC:1:100-1:300, ELISA:1:20000,

Restrictions: For Research Use only

Handling

Format: Liquid

Buffer: Liquid in PBS containing 50 % glycerol, 0.5 % BSA and 0.02 % sodium azide.

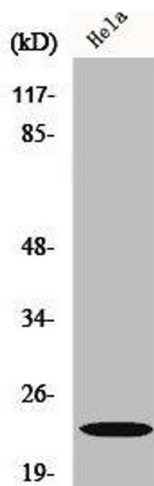
Preservative: Sodium azide

Precaution of Use: This product contains Sodium azide: a POISONOUS AND HAZARDOUS SUBSTANCE which should be handled by trained staff only.

Storage: -20 °C,-80 °C

Storage Comment: Upon receipt, store at -20°C or -80°C. Avoid repeated freeze.

Images



Western Blotting

Image 1. Western Blot analysis of Jurkat cells using CRP1 Polyclonal Antibody