



[Go to Product page](#)

Datasheet for ABIN7186436

## anti-CCL27 antibody (Internal Region)

### 3 Images

#### Overview

Quantity:	100 µg
Target:	CCL27
Binding Specificity:	Internal Region
Reactivity:	Human
Host:	Rabbit
Clonality:	Polyclonal
Conjugate:	This CCL27 antibody is un-conjugated
Application:	Western Blotting (WB), ELISA, Immunohistochemistry (IHC)

#### Product Details

Immunogen:	Synthesized peptide derived from the Internal region of Human CTACK.
Isotype:	IgG
Cross-Reactivity:	Human
Purification:	The antibody was affinity-purified from rabbit antiserum by affinity-chromatography using epitope-specific immunogen.

#### Target Details

Target:	CCL27
Alternative Name:	CCL27 ( <a href="#">CCL27 Products</a> )
Background:	ALP antibody, C-C motif chemokine 27 antibody, CC chemokine ILC antibody, Ccl27 antibody,

## Target Details

CCL27\_HUMAN antibody, Chemokine (C-C motif) ligand 27 antibody, CTACK antibody, CTAK antibody, Cutaneous T cell attracting chemokine antibody, Cutaneous T-cell-attracting chemokine antibody, ESKine antibody, IL 11 R alpha locus chemokine antibody, IL-11 R-alpha-locus chemokine antibody, ILC antibody, PESKY antibody, SCYA27 antibody, Skinkine antibody, Small inducible cytokine A27 antibody, small inducible cytokine subfamily A (Cys-Cys), member 27 antibody, Small-inducible cytokine A27 antibody

UniProt: [Q9Y4X3](#)

## Application Details

Application Notes: WB:1:500-1:2000, IHC:1:100-1:300, ELISA:1:10000,

Restrictions: For Research Use only

## Handling

Format: Liquid

Buffer: Liquid in PBS containing 50 % glycerol, 0.5 % BSA and 0.02 % sodium azide.

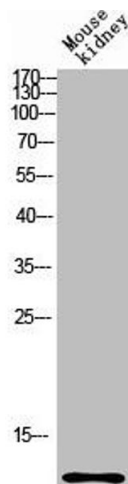
Preservative: Sodium azide

Precaution of Use: This product contains Sodium azide: a POISONOUS AND HAZARDOUS SUBSTANCE which should be handled by trained staff only.

Storage: -20 °C,-80 °C

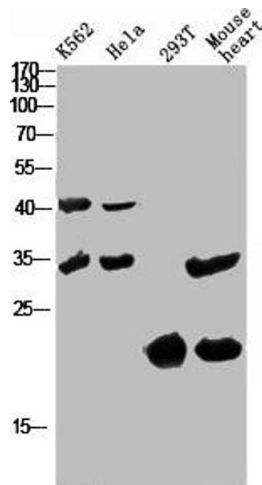
Storage Comment: Upon receipt, store at -20°C or -80°C. Avoid repeated freeze.

## Images



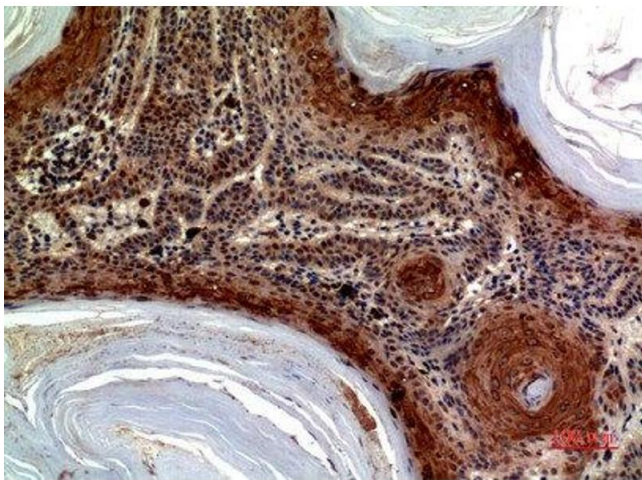
### Western Blotting

**Image 1.** Western blot analysis of mouse-kidney lysis using CCL27 antibody. Antibody was diluted at 1:1000. Secondary antibody was diluted at 1:20000



### Western Blotting

**Image 2.** Western Blot analysis of various cells using Antibody diluted at 1:1000. Secondary antibody was diluted at 1:20000



### Immunohistochemistry

**Image 3.** Immunohistochemical analysis of paraffin-embedded human-skin, antibody was diluted at 1:100